

Miscelatori incasso

Concealed mixers

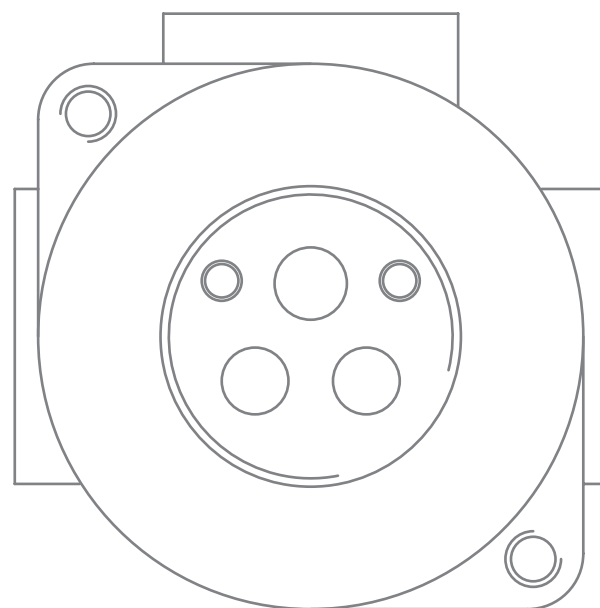
Einbau-Mischbatterien

Ø25

Per lavabo, con piastra o rosone,
per vasca e per doccia.

*For basin, with plate or rosas,
for bath and for shower.*

Für Waschtische, mit Platte oder mit Rosas,
für Badewannen und für Duschen

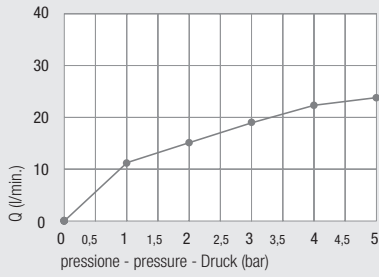


MIX INCASSO
Ø25

Miscelatore **lavabo** incasso
Concealed basin mixer
 Einbau-Mischbatterie für **Waschtische**

Ø25

Diagramma di portata
 (uscita libera)
*Flow diagram
 (free exit)*
 Diagramm der
 Durchflussleistung
 (freier Ausgang)



Piastre idonee - *Appropriate plates* - Passende Platten pag. 108

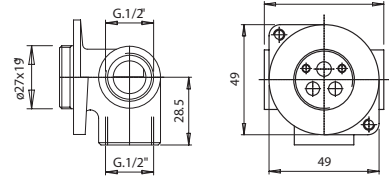
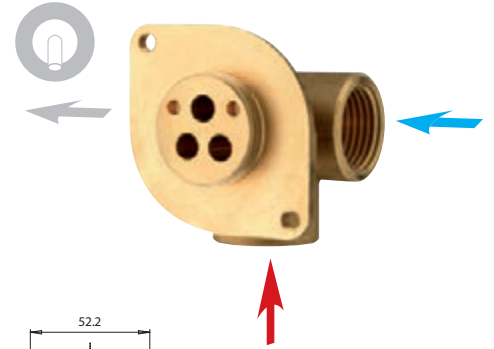


Art. 1002/25CA...



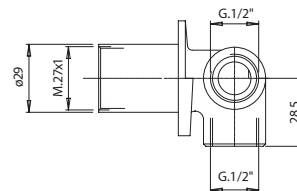
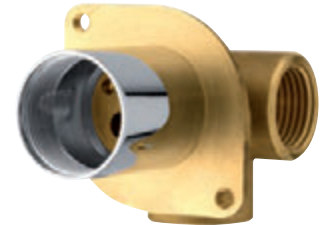
Art. 1225CA...

Art. 1174/25



Art. 2174/25

Con bicchiere
With cartridge ring seat
 Mit Kartuschenringsitz



Art. 1013/25

Anello sede cartuccia
Cartridge ring seat
 Kartuschenringsitz

**Art. 1003/25**

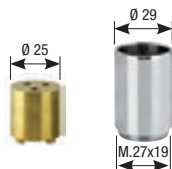
Cappuccio Ottone cromato
Chromed Brass Cap
 Kappe aus verchromtem Messing

**Art. 1004/25**

Ghiera
Ring nut
 Gewindehülse

**Art. 600/25**

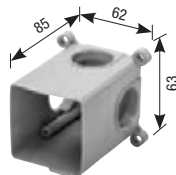
Kit prolunga sede cartuccia
Extension kit for cartridge seat
 Verlängerungsbausatz Kartuschensitz

**Art. PR29**

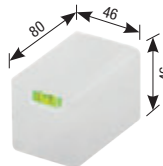
Protezione mix
Mix protection
 Schutzvorrichtung Mixer

**Art. 3184**

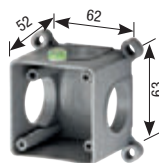
Scatola di assemblaggio
Multipurpose assembling box
 Montagegehäuse

**Art. 3187**

Coperchio scatola
Box cover
 Gehäuseabdeckung

**Art. 3195**

Scatola di assemblaggio
Multipurpose assembling box
 Montagegehäuse

**Art. 3196**

Coperchio scatola
Box cover
 Gehäuseabdeckung

**Art. 3184ME**

Membrana isolante
Insulating membrane
 Isolierungsmembran

**Art. 3185**

Prolunga G. 1/2"
Extension G. 1/2"
 Verlängerung mit 1/2"-Drehung

**Art. 3181G1/2**

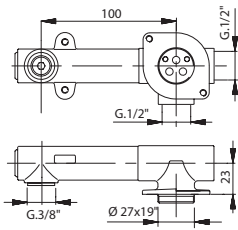
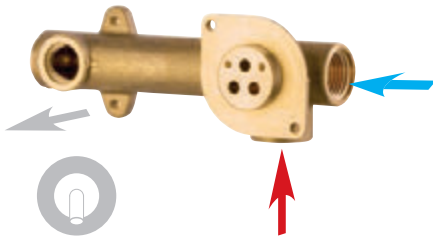
Guarnizione G.1/2"
Gasket G. 1/2"
 Dichtung mit 1/2"-Drehung



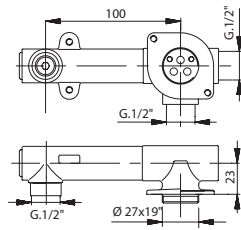
Miscelatore **lavabo** incasso
Concealed basin mixer
 Einbau-Mischbatterie für **Waschtische**

Ø25

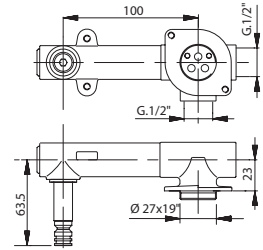
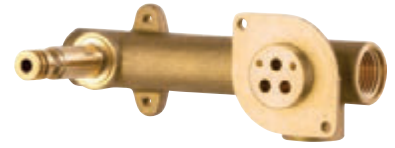
Art. 1175/25-3/8



Art. 1175/25-1/2



Art. 1175/25-3/8 BA



INSTALLATION Art. 00098 page 166 - Art. 00099 page 168

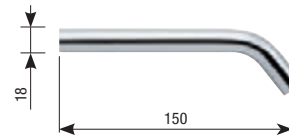
Art. 1013/25

Anello sede cartuccia
Cartridge ring seat
 Kartuschenringsitz



Art. 326

Bocca tonda
Round spout
 Runde Auslauf



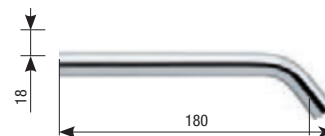
Art. 1003/25

Cappuccio Ottone cromato
Chromed Brass Cap
 Kappe aus verchromtem Messing



Art. 328

Bocca tonda
Round spout
 Runde Auslauf



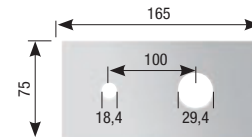
Art. 1004/25

Ghiera
Ring nut
 Gewindehülse



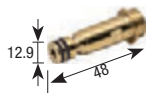
Art. 1028/25

Piastra cromata
Chromed plate
 Verchromte Platte



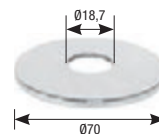
Art. 326 RAC

Innesto bocca erogazione
Spout connection
 Anschluss für Ausgabeeauslauf



Art. 325-326ROS

Rosoni h 2 mm
Rosas h 2 mm
 Rosas h 2 mm



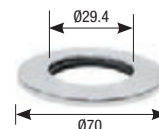
Art. 123B

Raccordo 1/2" F x G 3/8"
Connection 1/2" F x G 3/8"
 Fitting mit 1/2 F-Drehung x G 3/8"



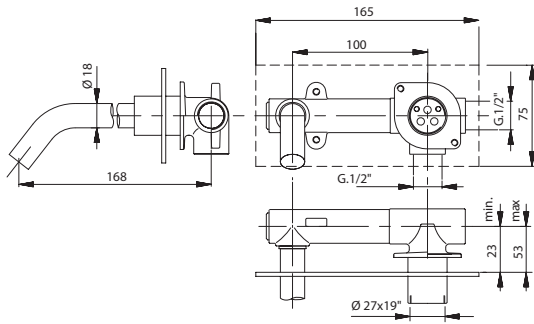
Art. 1013/25ROS

Rosoni h 2 mm
Rosas h 2 mm
 Rosas h 2 mm



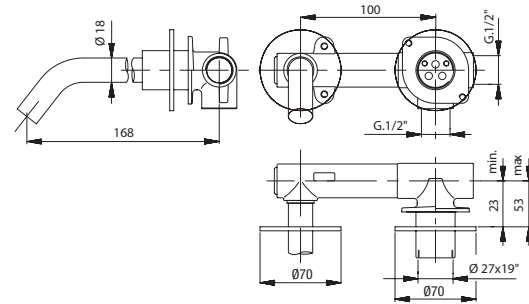
Art. 1028/326-25

Con piastra
With plate
Mit Platte



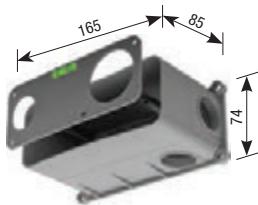
Art. 1175/25 ROS 326

Con rosone
With rosas
Mit Rosas



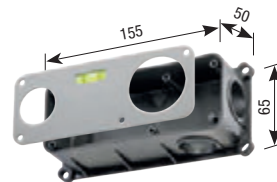
Art. 00098

Scatola di assemblaggio
Multipurpose assembling box
System box Montagegehäuse



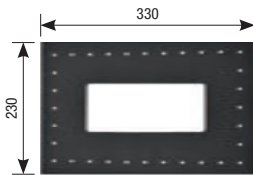
Art. 00099

Scatola di assemblaggio
Multipurpose assembling box
System box Montagegehäuse



Art. 00098ME

Membrana isolante
Insulating membrane
Isolierungsmembran



Art. PR29

Protezione mix
Mix protection
Schutzvorrichtung Mixer



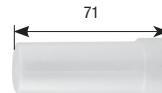
Art. 3181G1/2

Guarnizione G.1/2"
Gasket G. 1/2"
Dichtung mit 1/2"-Drehung



Art. PR22/19

Protezione coprifiletto
Thread protection
Gewindeabdeckungsschutz

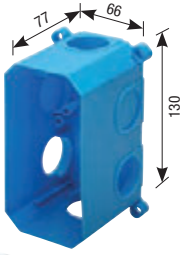


Ø25

2 exits

Art. 3181CG

Scatola di assemblaggio
Multipurpose assembling box
Montagegehäuse



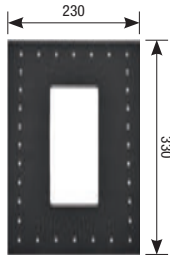
Art. 3183

Coperchio scatola
Box cover
Gehäuseabdeckung



Art. 3181ME

Membrana isolante
Insulating membrane
Isolierungsmembran



Art. 1013/25

Anello sede cartuccia
Cartridge ring seat
Kartuschenringsitz



Art. 1003/25

Cappuccio Ottone cromato
Chromed Brass Cap
Kappe aus verchromtem Messing



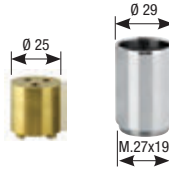
Art. 1004/25

Ghiera
Ring nut
Gewindehülse



Art. 600/25

Kit prolunga sede cartuccia
Extension kit for cartridge seat
Verlängerungsbausatz Kartuschensitz



Art. PR29

Protezione mix
Mix protection
Schutzvorrichtung Mixer



Art. PR20

Protezione in plastica
Plastic protection
Kunststoffschutzvorrichtung



Art. 3185

Prolunga G.1/2"
Extension G.1/2"
Verlängerung mit 1/2"-Drehung



Art. 3181G1/2

Guarnizione G.1/2"
Gasket G.1/2"
Dichtung mit 1/2"-Drehung

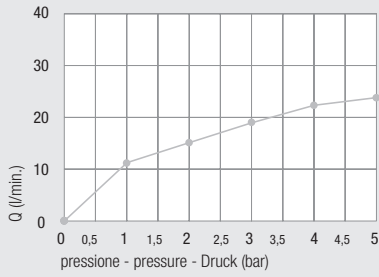


Miscelatore **doccia** incasso
Concealed shower mixer
 Einbau-Mischbatterie für **Duschen**

Ø25

DZR
 Available

Diagramma di portata
 (uscita libera)
*Flow diagram
 (free exit)*
 Diagramm der
 Durchflussleistung
 (freier Ausgang)



Piastre idonee - *Appropriate plates* - Passende Platten pag. 108

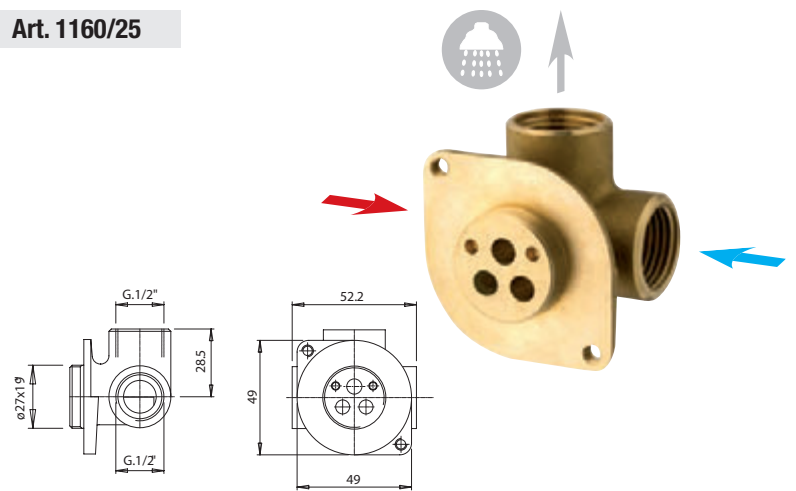


Art. 1002/25CA...



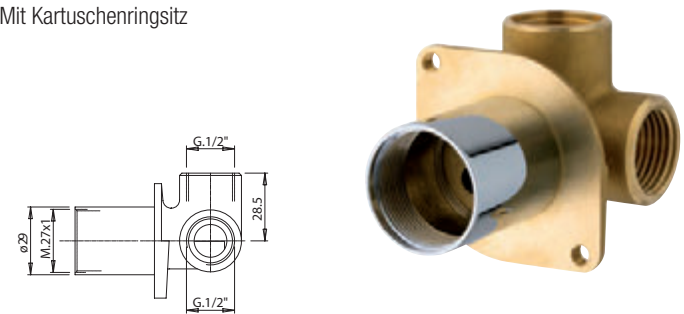
Art. 1225CA...

Art. 1160/25



Art. 1170/25

Con bicchiere
With cartridge ring seat
 Mit Kartuschenringsitz



Art. 1013/25

Anello sede cartuccia
Cartridge ring seat
 Kartuschenringsitz

**Art. 1003/25**

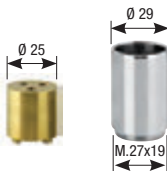
Cappuccio Ottone cromato
Chromed Brass Cap
 Kappe aus verchromtem Messing

**Art. 1004/25**

Ghiera
Ring nut
 Gewindehülse

**Art. 600/25**

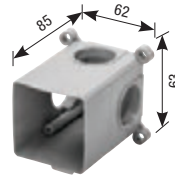
Kit prolunga sede cartuccia
Extension kit for cartridge seat
 Verlängerungsbausatz Kartuschensitz

**Art. PR29**

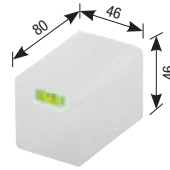
Protezione mix
Mix protection
 Schutzvorrichtung Mixer

**Art. 3184**

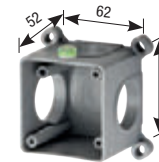
Scatola di assemblaggio
Multipurpose assembling box
 Montagegehäuse

**Art. 3187**

Coperchio scatola
Box cover
 Gehäuseabdeckung

**Art. 3195**

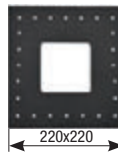
Scatola di assemblaggio
Multipurpose assembling box
 Montagegehäuse

**Art. 3196**

Coperchio scatola
Box cover
 Gehäuseabdeckung

**Art. 3184ME**

Membrana isolante
Insulating membrane
 Isolierungsmembran

**Art. 3185**

Prolunga G.1/2"
Extension G.1/2"
 Verlängerung mit 1/2"-Drehung

**Art. 3181G1/2**

Guarnizione G.1/2"
Gasket G.1/2"
 Dichtung mit 1/2"-Drehung

