

Miscelatori incasso

Concealed mixers

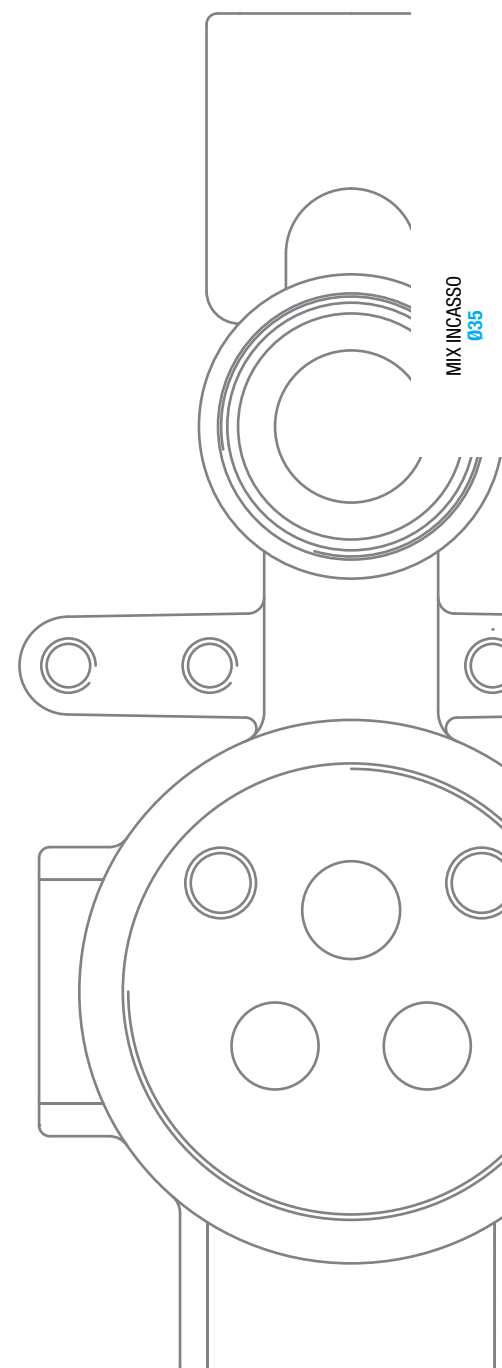
Einbau-Mischbatterien

Ø35

Differenti possibilità di miscelatori da incasso, dal semplice corpo doccia fino alla combinazione con deviatori click-clack e a pulsante a 2 vie; ceramici a 2/3 vie per un'ampia gamma di soluzioni.

Different possibilities of built-in mixers, from the simple shower body to the combination with click-clack diverters and 2-way push-button; 2/3-way ceramic for a wide range of solutions.

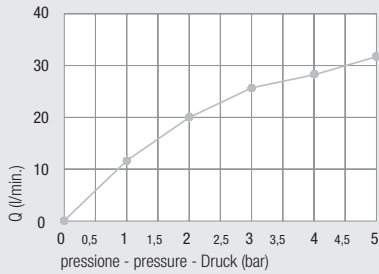
Verschiedene Möglichkeiten der Einbaumischer, vom einfachen Duschkörper bis hin zur Kombination mit Klick-Klack-Umstellern und 2-Wege-Drucktaster; 2/3-Wege Keramik für ein breites Spektrum an Lösungen.



Miscelatore **lavabo** incasso *Concealed basin mixer* Einbau-Mischbatterie für **Waschtische**

Ø35

Diagramma di portata
 (uscita libera)
*Flow diagram
 (free exit)*
 Diagramm der
 Durchflussleistung
 (freier Ausgang)



Piastre idonee - *Appropriate plates* - Passende Platten pag. 108



Art. 1194...



Art. 1198...



Art. 1002...



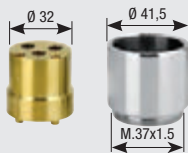
Art. 1235CA



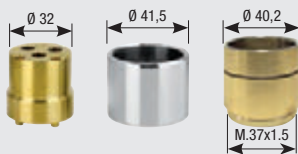
Art. 1050CA...

kit prolunga sede cartuccia
Extension kit for cartridge seat
 Verlängerungsbausatz Kartuschensitz

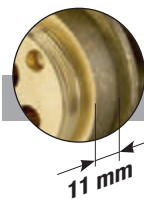
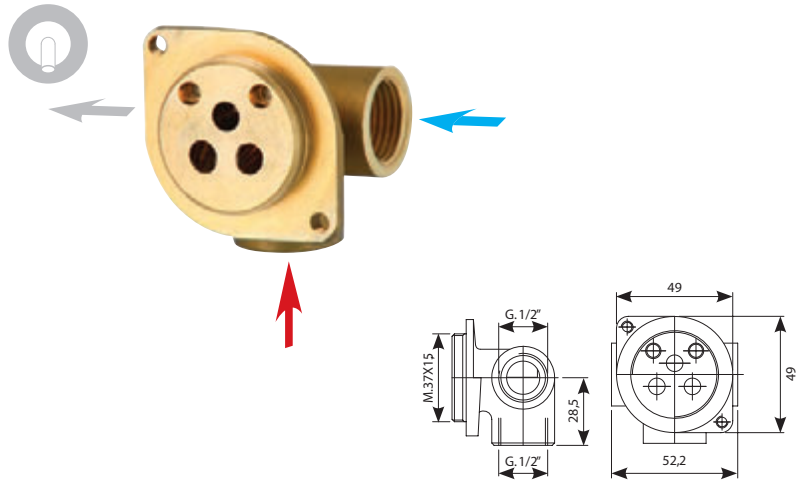
Art. 600/35



Art. 600/35 SC

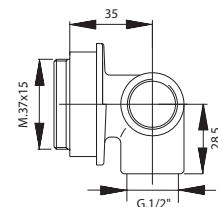


Art. 1174/35



versione prolungata - *extended version* - Erweiterte

Art. 1174/35 AL



INSTALLATION Art. 3195 page 156 - Art. 3184 page 154

Art. 1013/35

Anello sede cartuccia
Cartridge ring seat
 Kartuschenringsitz



Art. 1003SF

Cappuccio ABS
ABS cap
 ABS-Kappe



Art. 3185

Prolunga G. 1/2"
Extension G. 1/2"
 Verlängerung mit 1/2"-Drehung



Art. 3181G1/2

Guarnizione G. 1/2"
Gasket G. 1/2"
 Dichtung mit 1/2"-Drehung



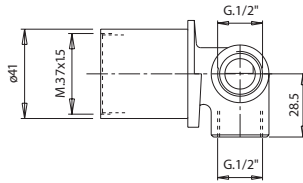
Art. 1004BS

Ghiera
Ring nut
 Gewindehülse



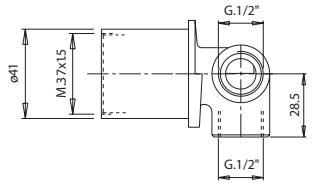
Art. 2174/35

Con anello sede cartuccia
With cartridge ring seat
 Mit Kartuschenringsitz



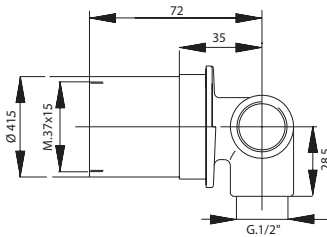
Art. 3174/35

Con cappuccio scorrevole
With sliding sleeve
 Mit Schiebehaube

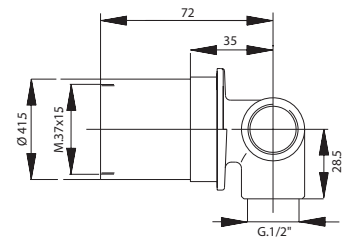


Version

Art. 2174/35 AL



Art. 3174/35 AL



MIX INCASSO
 035

Art. 1468
 Anello sede cartuccia
Cartridge ring seat
 Kartuschenringsitz



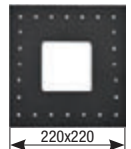
Art. 1465
 Cappuccio scorrevole
Sliding sleeve
 Schiebehaube



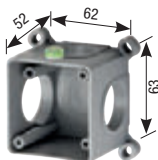
Art. PR42
 Protezione mix
Mix protection
 Schutzvorrichtung Mixer



Art. 3184ME
 Membrana isolante
Insulating membrane
 Isolierungsmembran



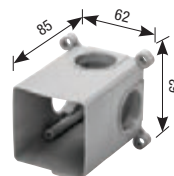
Art. 3195
 Scatola di assemblaggio
Multipurpose assembling box
 Montagegehäuse



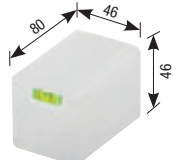
Art. 3196
 Piastra copriscatola
Box cover plate
 Abdeckplatte des Kastens



Art. 3184
 Scatola di assemblaggio
Multipurpose assembling box
 Montagegehäuse



Art. 3187
 Coperchio scatola
Box cover
 Gehäuseabdeckung

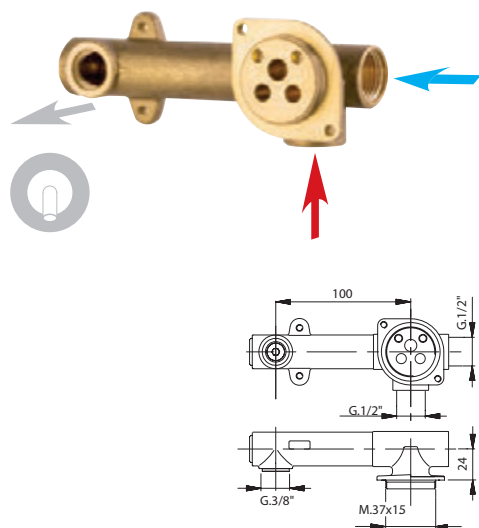


Miscelatore **lavabo** incasso
Concealed basin mixer
 Einbau-Mischbatterie für **Waschtische**

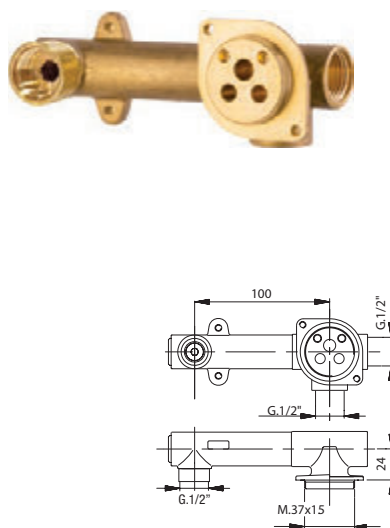
disponibile in **ottone CW 510**
 available **CW 510 brass**
 erhältlich in **CW 510 Messing**

Ø35

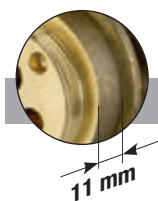
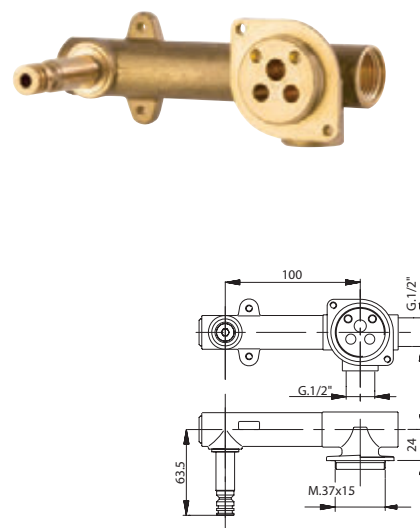
Art. 1175/35-3/8



Art. 1175/35-1/2

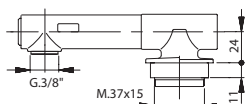


Art. 1175/35 BA

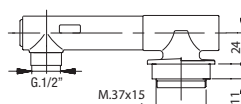


versione **prolungata** - **extended version** - **Erweiterte Version**

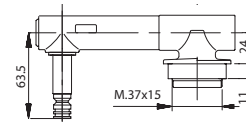
Art. 1175/35-3/8 AL



Art. 1175/35-1/2 AL



Art. 1175/35 BA AL



INSTALLATION Art. 00098 page 166 - Art. 00099 page 168

Art. 1468
 Anello sede cartuccia
Cartridge ring seat
 Kartuschenringsitz



Art. 123B
 Raccordo 1/2" F x G 3/8"
 Connection 1/2" F x G 3/8"
 Fitting mit 1/2 F-Drehung x G 3/8"



Art. 3181G1/2
 Guarnizione G.1/2"
Gasket G.1/2"
 Dichtung mit 1/2"-Drehung



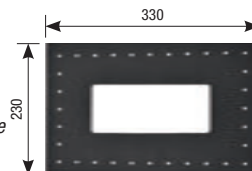
Art. 1465
 Cappuccio scorrevole
Sliding sleeve
 Schiebehaube



Art. 326 RAC
 Innesto bocca erogazione
Spout connection
 Anschluss für Ausgabeauslauf



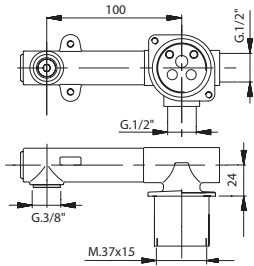
Art. 00098ME
 Membrana isolante
Insulating membrane
 Isolierungsmembran



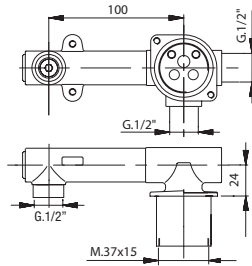


con cappuccio scorrevole - with sliding sleeve - mit Schiebehaube

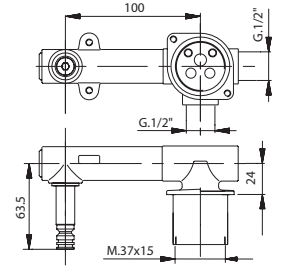
Art. 1175/35-3/8 SC



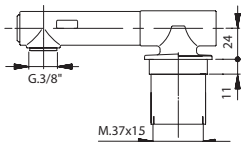
Art. 1175/35-1/2 SC



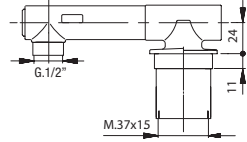
Art. 1175/35 BA SC



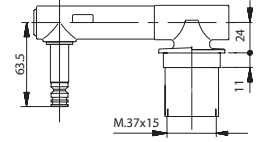
Art. 1175/35-3/8 SC AL



Art. 1175/35-1/2 SC AL



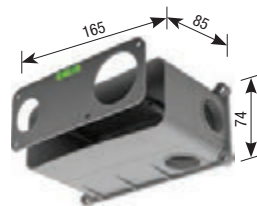
Art. 1175/35 BA SC AL



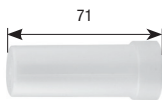
Art. PR42
Protezione mix
Mix protection
Schutzvorrichtung Mixer



Art. 00098
Scatola di assemblaggio
Multipurpose assembling box
System box Montagegehäuse



Art. PR22/19
Protezione coprifiletto
Thread protection
Gewindeabdeckungsschutz



Art. 00099
Scatola di assemblaggio
Multipurpose assembling box
System box Montagegehäuse



Miscelatore **lavabo** incasso

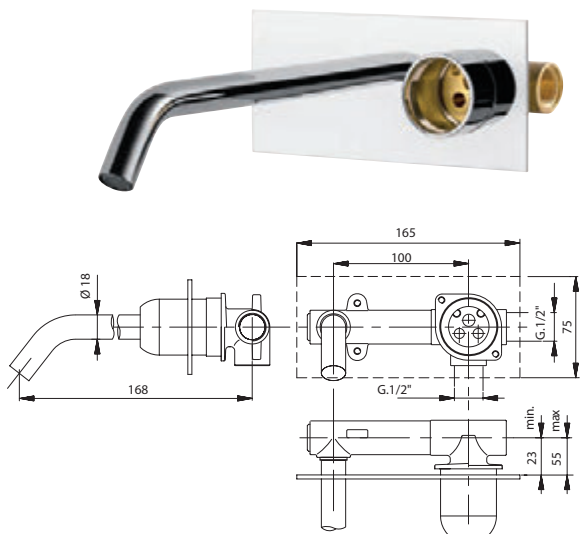
Concealed **basin** mixer

Einbau-Mischbatterie für **Waschtische**

Ø35

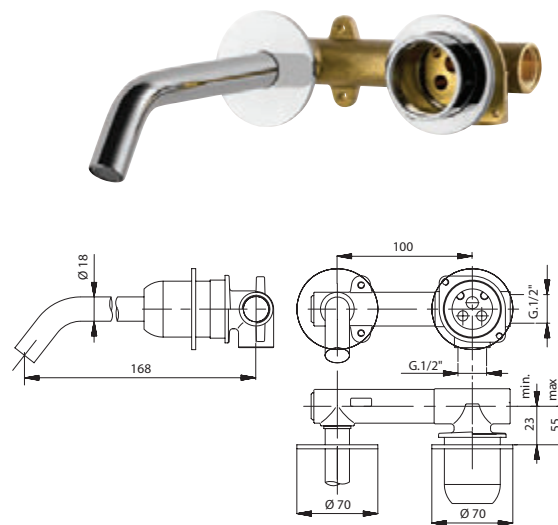
Art. 1028/326

Con piastra
With plate
Mit Platte



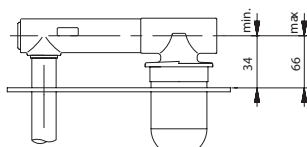
Art. 1175/35 ROS 326

Con rosone
With rosas
Mit rosas

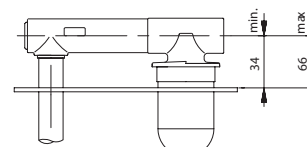


versione **prolungata** - **extended version** - **Erweiterte Version**

Art. 1028/326 AL



Art. 1175/35 ROS 326 AL



INSTALLATION Art. 00098 page 166 - Art. 00099 page 168

Art. 1013/35

Anello sede cartuccia
Cartridge ring seat
Kartuschenringsitz



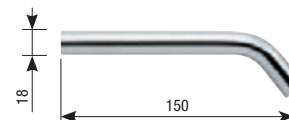
Art. 1468

Anello sede cartuccia
Cartridge ring seat
Kartuschenringsitz



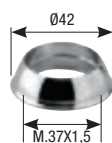
Art. 326

Bocca tonda
Round spout
Runde Auslauf



Art. 1003SF

Cappuccio ABS
ABS cap
ABS-Kappe



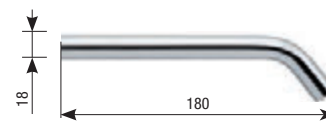
Art. 1465

Cappuccio scorrevole
Sliding sleeve
Schiebehaube



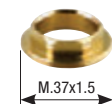
Art. 328

Bocca tonda
Round spout
Runde Auslauf



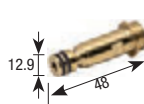
Art. 1004BS

Ghiera
Ring nut
Gewindehülse



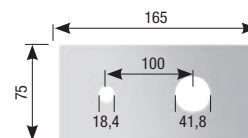
Art. 326 RAC

Innesto bocca erogazione
Spout connection
Anschluss für Ausgabeauslauf



Art. 1028

Piastra cromata
Chromed plate
Verchromte Platte

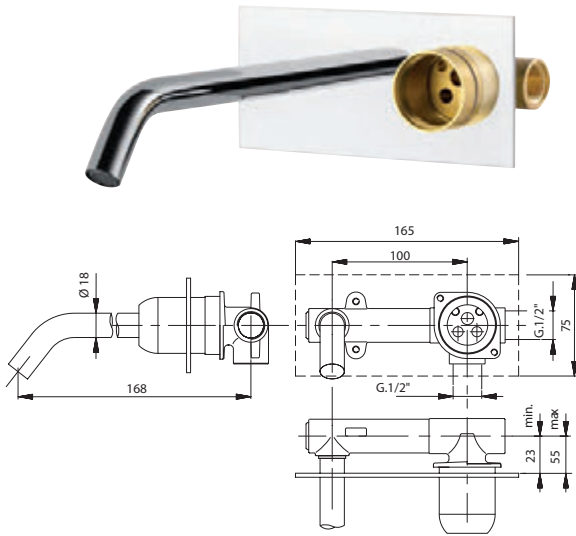




con cappuccio scorrevole - with sliding sleeve - mit Schiebehaube

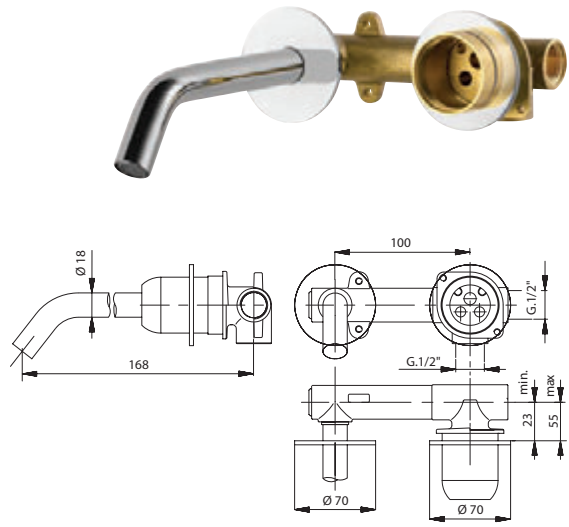
Art. 1028/326 SC

Con piastra
With plate
Mit Platte

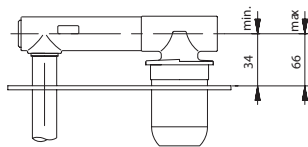


Art. 1175/35 ROS 326 SC

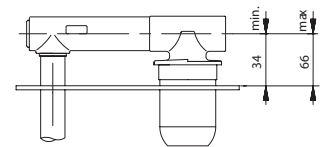
Con rosni
With rosas
Mit rosas



Art. 1028/326 AL

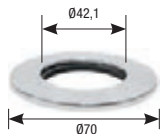


Art. 1175/35 ROS 326 AL



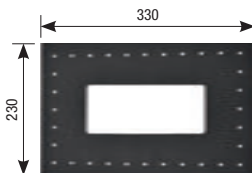
Art. 1013/35ROS

Rosni h 2 mm
Rosas h 2 mm
Rosas h 2 mm



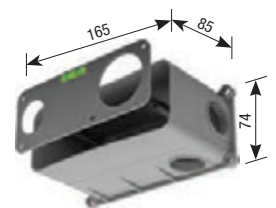
Art. 00098ME

Membrana isolante
Insulating membrane
Isolierungsmembran



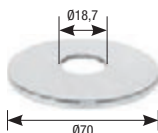
Art. 00098

Scatola di assemblaggio
Multipurpose assembling box
System box Montagegehäuse



Art. 325-326ROS

Rosni h 2 mm
Rosas h 2 mm
Rosas h 2 mm



Art. 3181G1/2

Guarnizione G. 1/2"
Gasket G. 1/2"
Dichtung mit 1/2"-Drehung



Art. 00099

Scatola di assemblaggio
Multipurpose assembling box
System box Montagegehäuse



Art. PR42

Protezione mix
Mix protection
Schutzvorrichtung Mixer



Art. PR22/19

Protezione coprifiletto
Thread protection
Gewindeabdeckungsschutz



Miscelatore **vasca** incasso

Concealed **bath** mixer

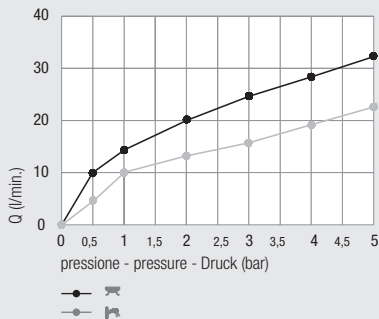
Einbau-Mischbatterie für **Badewannen**



Diagramma di portata (uscita libera)

Flow diagram (free exit)

Diagramm der Durchflussleistung (freier Ausgang)



Piastre idonee - *Appropriate plates* - Passende Platten pag. 108



Art. 1182...



Art. 1192...



Art. 1192/P...



Art. 1192GUAD



Art. 1030CA



Art. 1186...

Design



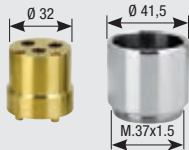
Art.Q
Versione quadrata
Square version
Quadratische Ausführung



Art.MN
Versione minimal ottone cromato o ABS
Minimal design version brass-chrome or ABS
Minimalistische Ausführung Verchromtes Messing oder ABS

kit prolunga sede cartuccia
Extension kit for cartridge seat
Verlängerungsbausatz Kartuschensitz

Art. 600/35



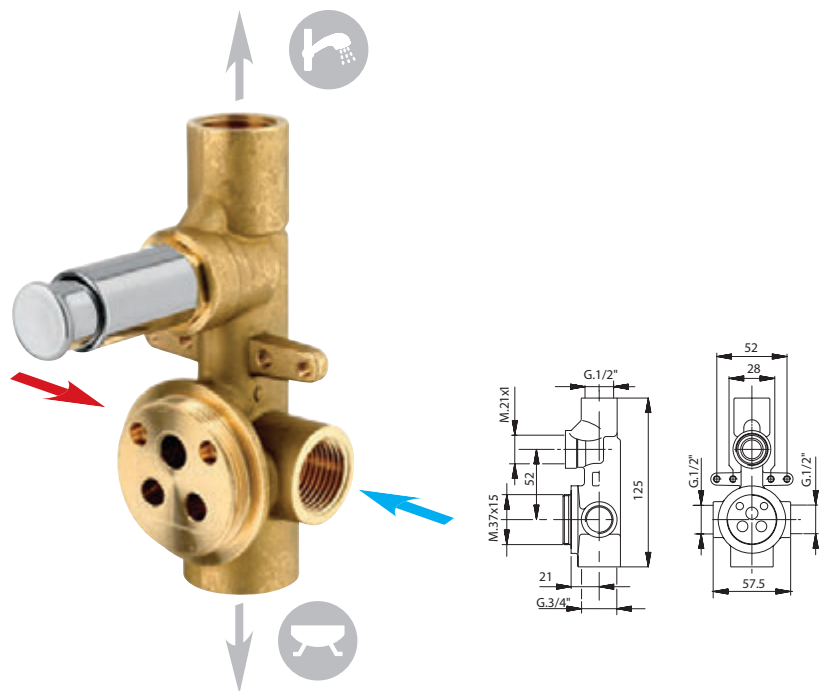
Art. 600/35 SC



con deviatore **click-clack**
with click-clack diverter
mit **click-clack**



con deviatore a pulsante
with push diverter
mit **Druckknopfumstellung**



(Art. 1502 KS)

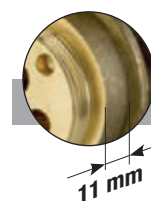


Art. 1180/35 K

(Art. 1502)



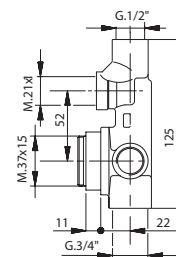
Art. 1180/35



versione prolungata - *extended version* - **Erweiterte**

Art. 1180/35 AL K

Art. 1180/35 AL



INSTALLATION Art. 3181CG page.160

Art. 1013/35

Anello sede cartuccia
Cartridge ring seat
Kartuschenringsitz



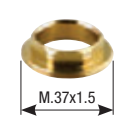
Art. 1003SF

Cappuccio ABS
ABS cap
ABS-Kappe



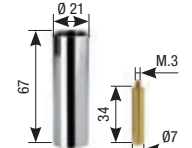
Art. 1004BS

Ghiera
Ring nut
Gewindehülse



Art. 610

Prolunga deviatore
Diverter extension
Verlängerung Umstellventil



Art. 3181G1/2

Guarnizione G. 1/2"
Gasket G. 1/2"
Dichtung mit 1/2"-Drehung

Art. 3181G3/4

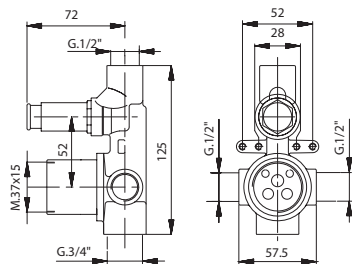
Guarnizione G. 3/4"
Gasket G. 3/4"
Dichtung mit 3/4"-Drehung



2 exits

Ø35

Con anello sede cartuccia
With cartridge ring seat
Mit Kartuschenringsitz



(Art. 1502 KS)



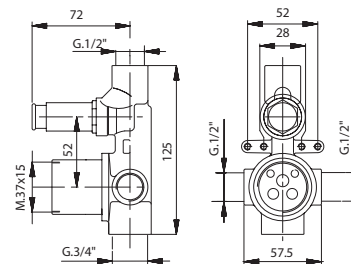
Art. 1190/35 K

(Art. 1502)



Art. 1190/35

Con cappuccio scorrevole
With sliding sleeve
Mit Schiebehaube



(Art. 1502 KS)



Art. 1190/35 K SC

(Art. 1502)



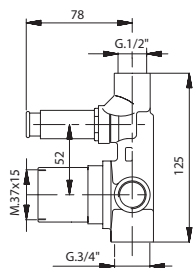
Art. 1190/35 SC

MIX INCASSO
Ø35

Version

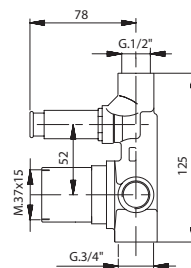
Art. 1190/35 AL K

Art. 1190/35 AL



Art. 1190/35 AL K SC

Art. 1190/35 AL SC



Art. 1468
Anello sede cartuccia
Cartridge ring seat
Kartuschenringsitz



Art. 1465
Cappuccio scorrevole
Sliding sleeve
Schiebehaube



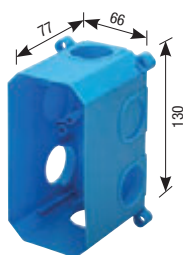
Art. PR42
Protezione mix
Mix protection
Schutzvorrichtung Mixer



Art. PR20
Protezione in plastica
Plastic protection
Kunststoffschutzvorrichtung



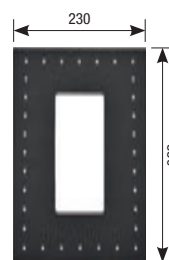
Art. 3181CG
Scatola di assemblaggio
Multipurpose assembling box
Montagegehäuse



Art. 3183
Coperchio scatola
Box cover
Gehäuseabdeckung



Art. 3181ME
Membrana isolante
Insulating membrane
Isolierungsmembran



Art. 3185
Prolunga G.1/2\"/>
Extension G.1/2\"/>
Verlängerung mit 1/2\"-Drehung

Art. 3186
Prolunga G.3/4\"/>
extension G.3/4\"/>
Verlängerung mit 3/4\"-Drehung



Miscelatore **vasca** incasso

Concealed **bath** mixer

Einbau-Mischbatterie für **Badewannen**

con deviatore **click-clack**
with **click-clack** diverter
mit **click-clack**



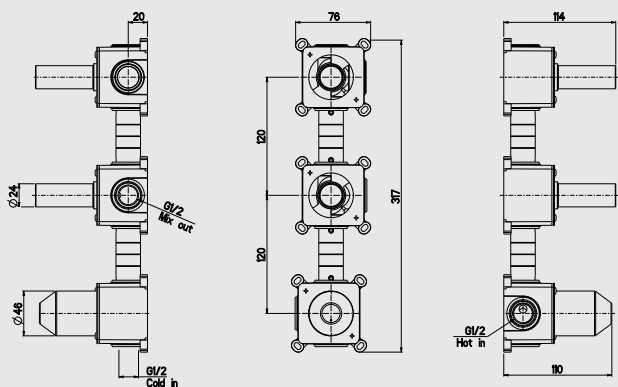
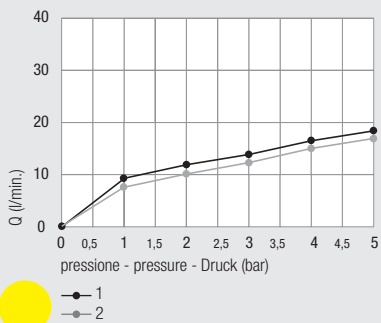
con deviatore a pulsante
with **push** diverter
mit **Druckknopf**umstellung



Diagramma di portata
(uscita libera)

Flow diagram
(free exit)

Diagramm der
Durchflussleistung
(freier Ausgang)



Design



Art.Q
Versione quadrata
Square version
Quadratische Ausführung

kit prolunga sede cartuccia
Extension kit for cartridge seat
Verlängerungsbausatz Kartuschensitz

Art. 600/35



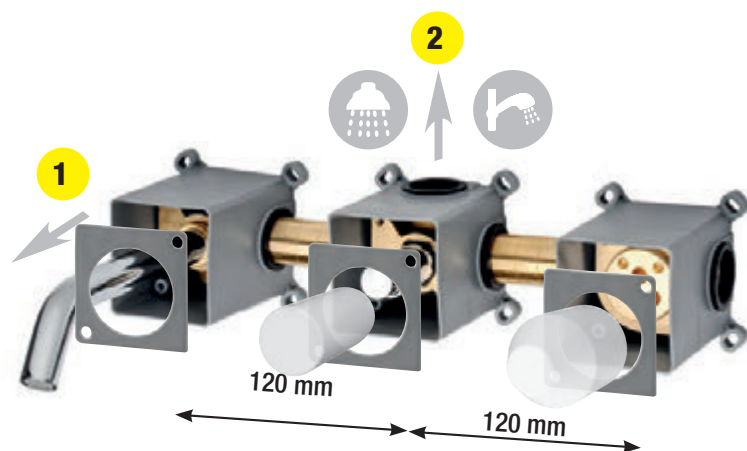
Art. 600/35 SC



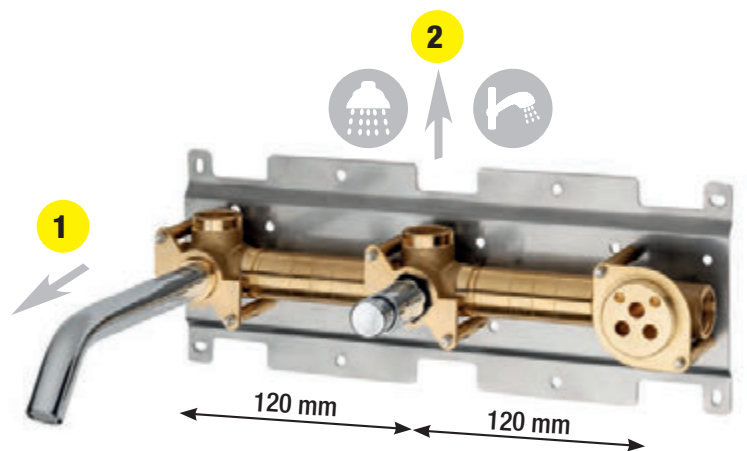
1043/35

1068PRO

CON scatola - with box - mit Unterputzdose



CON piastra - with plate - mit Platte



per miscelatore e per deviatore
for mixer and for diverter
für Mischer und für Umsteller

Art. 3195
Scatola di assemblaggio
Multipurpose assembling box
Montagegehäuse



Art. 3196
Piastra copriscatola
Box cover plate
Abdeckplatte des Kastens



Art. PR42
Protezione mix
Mix protection
Schutzvorrichtung Mixer



Art. PR20K
Protezione in plastica
Plastic protection
Kunststoffschutzvorrichtung



(Art. 1502 KS)



Art. 2403-Y01K

con **anello sede cartuccia**
with **cartridge ring seat**
mit **Kartuschenringsitz**



Art. 2403-Y01KA



con **cappuccio scorrevole**
with **sliding sleeve**
mit **Schiebehaube**



Art. 2403-Y01KSC

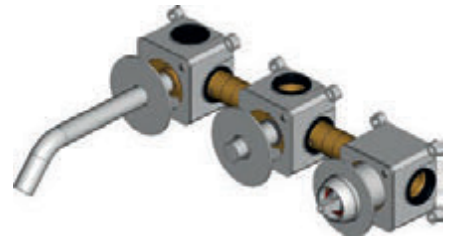
(Art. 1502)



Art. 2403-Y01

Art. 2403-Y01A

Art. 2403-Y01SC



INSTALLATION next page

(Art. 1502 KS)



Art. 2403-YY01K

Art. 2403-YY01KA

Art. 2403-YY01KSC

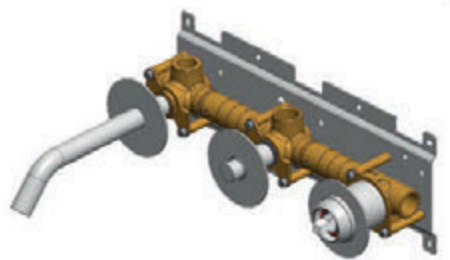
(Art. 1502)



Art. 2403-YY01

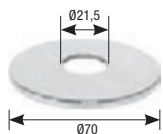
Art. 2403-YY01A

Art. 2403-YY01SC



Art. 1502ROS

Rosoni h 2 mm
Rosas h 2 mm
Rosas h 2 mm



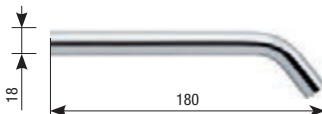
Art. 1013/35

Anello sede cartuccia
Cartridge ring seat
Kartuschenringsitz



Art. 328

Bocca tonda
Round spout
Runde Auslauf

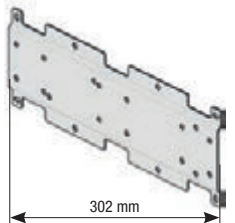


Art. 3185

Prolunga G.1/2"
Extension G.1/2"
Verlängerung mit 1/2"-Drehung



STAFF1



Art. 1003SF

Cappuccio ABS
ABS cap
ABS-Kappe



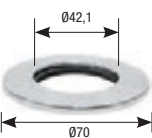
Art. 1004BS

Ghiera
Ring nut
Gewindehülse



Art. 1013/35ROS

Rosoni h 2 mm
Rosas h 2 mm
Rosas h 2 mm



Art. 1468

Anello sede cartuccia
Cartridge ring seat
Kartuschenringsitz



Art. 1465

Cappuccio scorrevole
Sliding sleeve
Schiebehaube



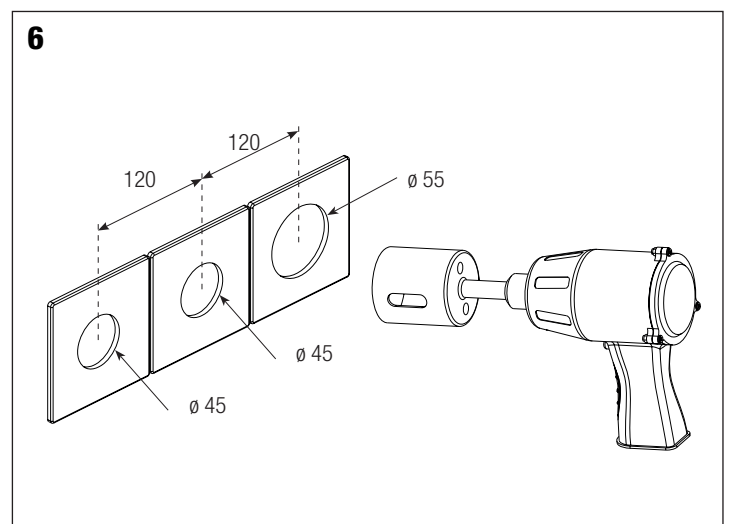
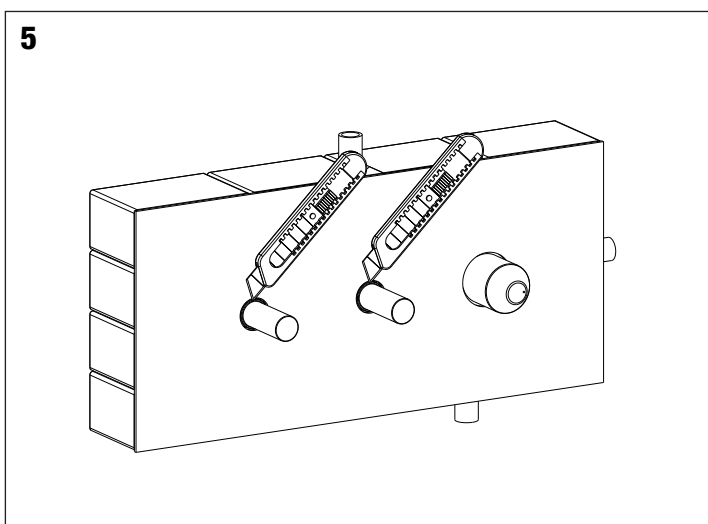
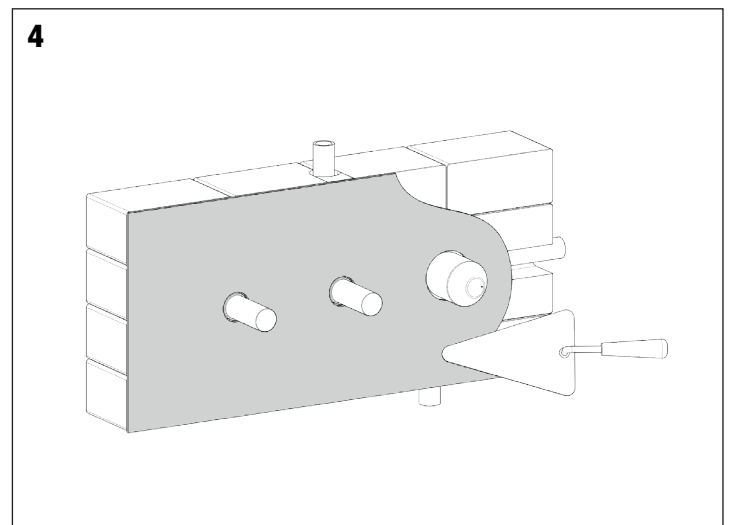
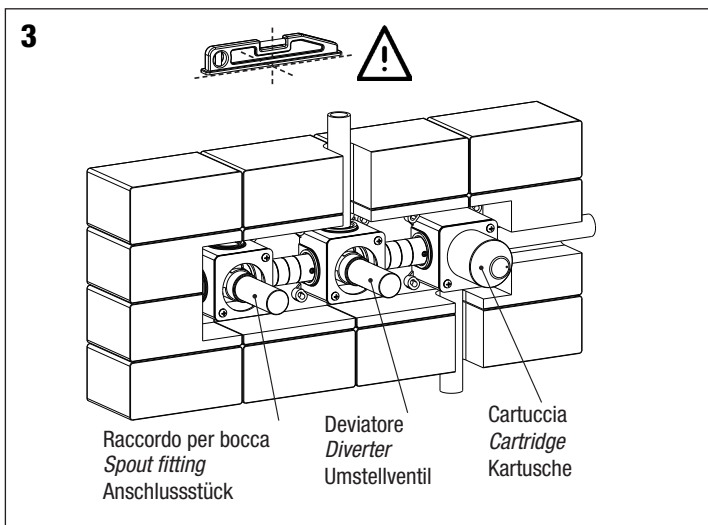
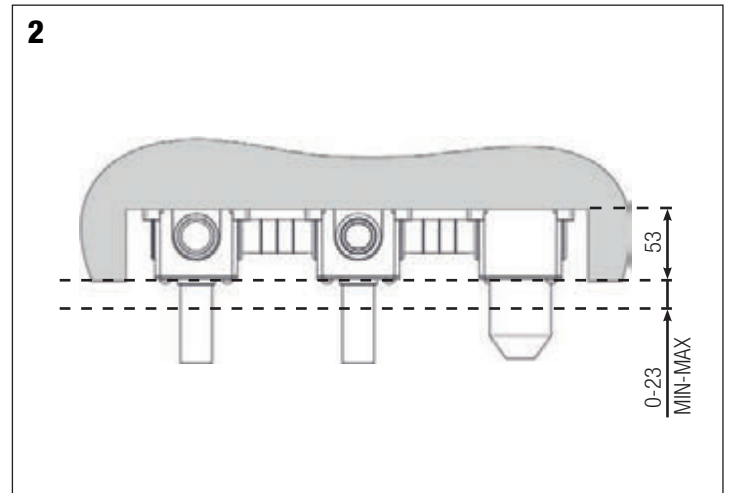
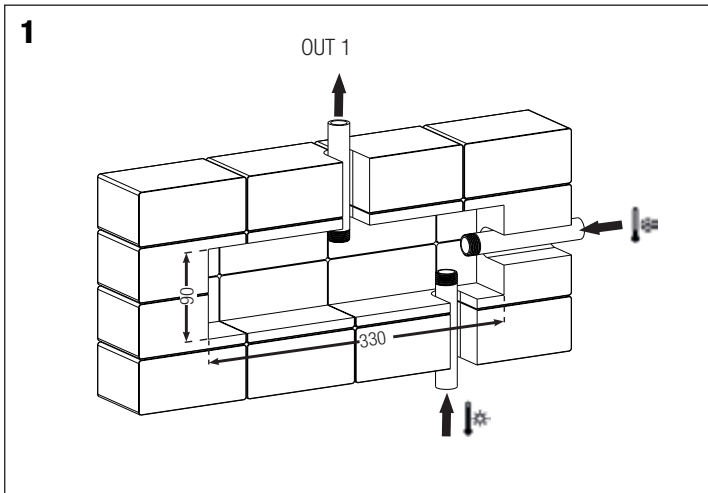
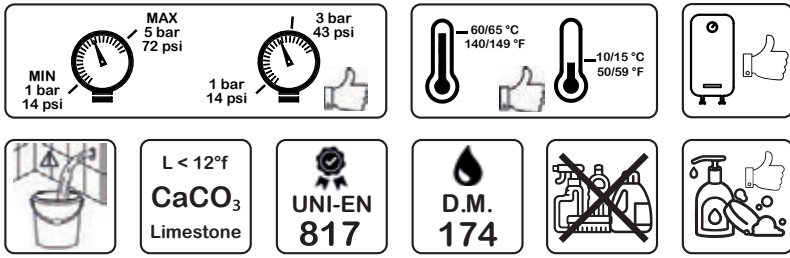
Art. 3181G/1/2

Guarnizione G.1/2"
Gasket G.1/2"
Dichtung mit 1/2"-Drehung

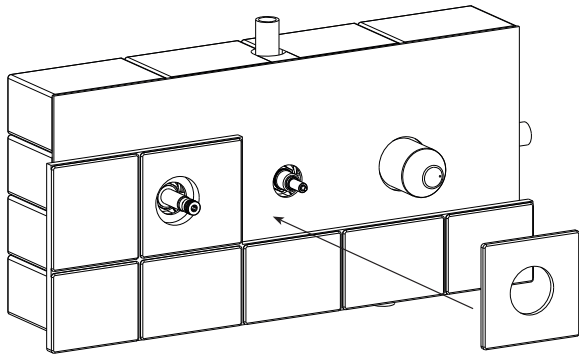


Installazione e manutenzione
Installation and maintenance
Installation und wartung

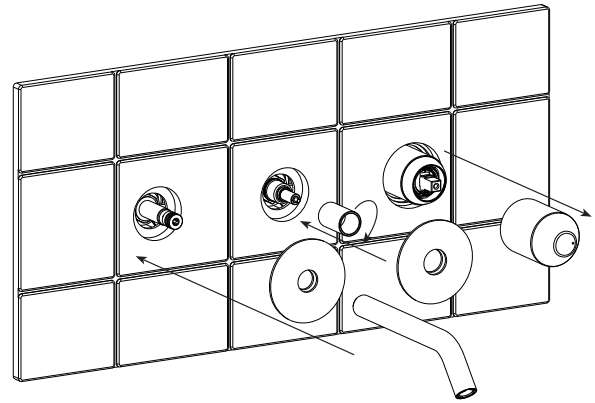
Art. 2403-y01



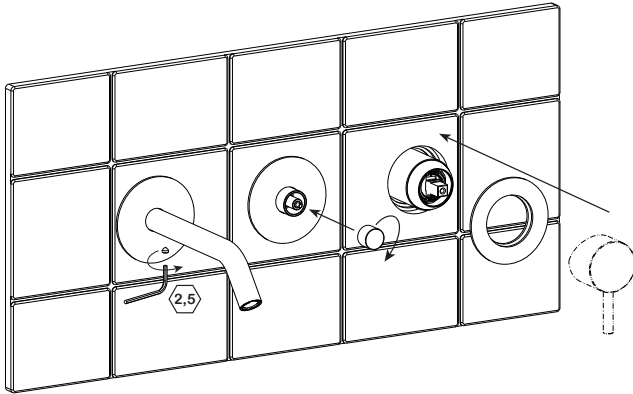
7



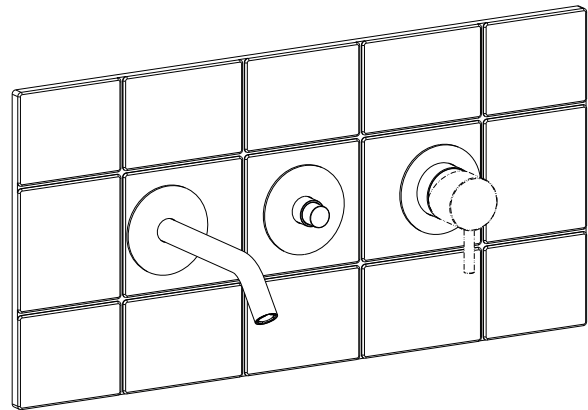
8



9

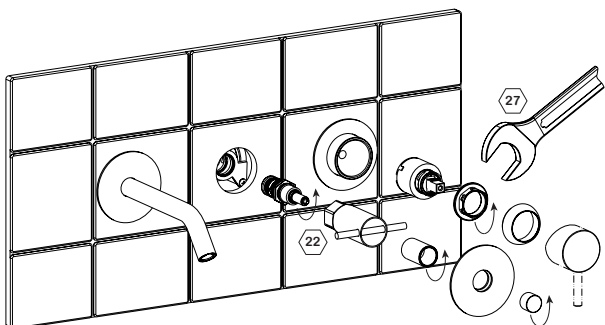


10



Sostituzione delle cartucce - Cartridges replacement

Prima di procedere alla manutenzione o alla sostituzione, chiudere l'acqua della rete idrica.
Turn off the mains water before carrying out maintenance or replacement operations.
Vor dem Austausch oder Wartungsarbeiten das Wasser am Haupthahn abstellen.



Miscelatore doccia incasso Concealed shower mixer Einbau-Mischbatterie für Duschen

uscita superiore
upper exit
oberer Ausgang

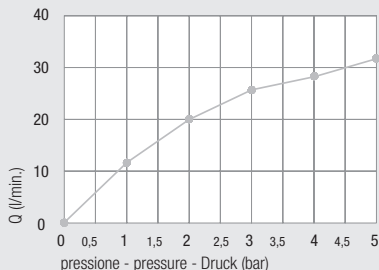
Ø35

DZR
Available

Diagramma di portata
(uscita libera)

Flow diagram
(free exit)

Diagramm der
Durchflussleistung
(freier Ausgang)



Piastre idonee - Appropriate plates - Passende Platten pag. 108



Art. 1194...



Art. 1198...



Art. 1002...



Art. 1235CA



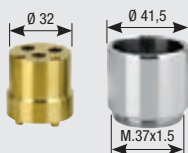
Art. 1050CA...

kit prolunga sede cartuccia

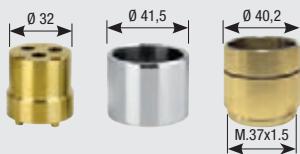
Extension kit for cartridge seat

Verlängerungsbausatz Kartuschensitz

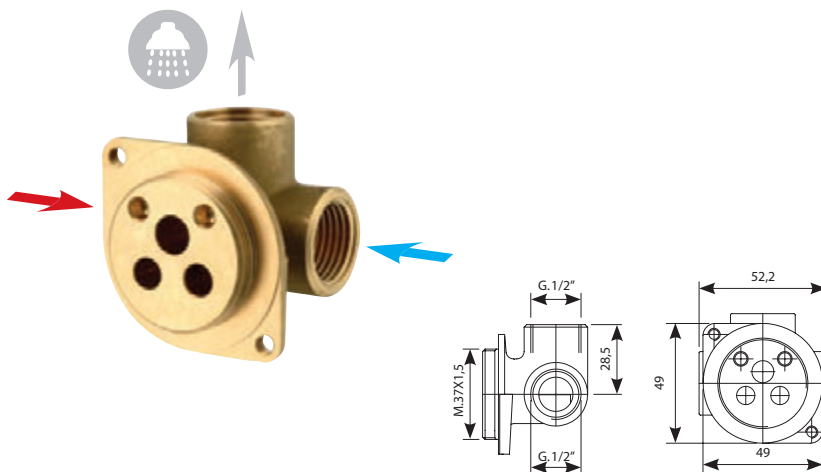
Art. 600/35



Art. 600/35 SC



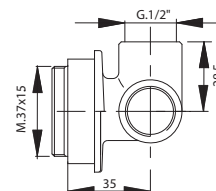
Art. 1160/35



versione prolungata - extended version - Erweiterte

11 mm

Art. 1160/35 AL



INSTALLATION Art. 3195 page 156 - Art. 3184 page 154

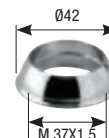
Art. 1013/35

Anello sede cartuccia
Cartridge ring seat
Kartuschenringsitz



Art. 1003SF

Cappuccio ABS
ABS cap
ABS-Kappe



Art. 3185

Prolunga G. 1/2"
Extension G. 1/2"
Verlängerung mit 1/2"-Drehung



Art. 3181G1/2

Guarnizione G. 1/2"
Gasket G. 1/2"
Dichtung mit 1/2"-Drehung



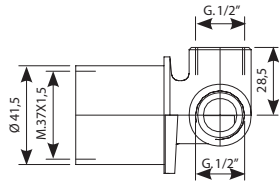
Art. 1004BS

Ghiera
Ring nut
Gewindehülse



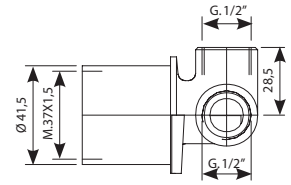
Art. 1170/35

Con anello sede cartuccia
With cartridge ring seat
 Mit Kartuschenringsitz



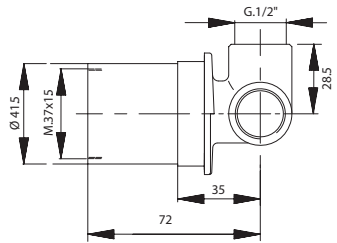
Art. 2170/35

Con cappuccio scorrevole
With sliding sleeve
 Mit Schiebehaube

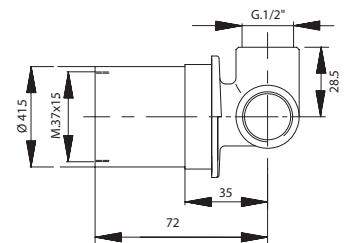


Version

Art. 1170/35 AL



Art. 2170/35 AL



Art. 1468
 Anello sede cartuccia
Cartridge ring seat
 Kartuschenringsitz



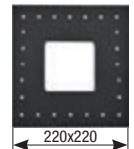
Art. 1465
 Cappuccio scorrevole
Sliding sleeve
 Schiebehaube



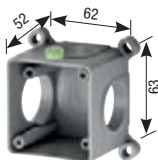
Art. PR42
 Protezione mix
Mix protection
 Schutzvorrichtung Mixer



Art. 3184ME
 Membrana isolante
Insulating membrane
 Isolierungsmembran



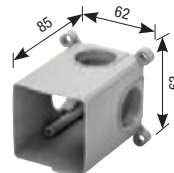
Art. 3195
 Scatola di assemblaggio
Multipurpose assembling box
 Montagegehäuse



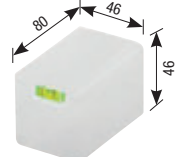
Art. 3196
 Piastra copriscatola
Box cover plate
 Abdeckplatte des Kastens



Art. 3184
 Scatola di assemblaggio
Multipurpose assembling box
 Montagegehäuse



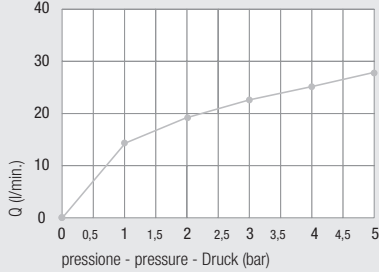
Art. 3187
 Coperchio scatola
Box cover
 Gehäuseabdeckung



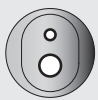
Miscelatore doccia incasso Concealed shower mixer Einbau-Mischbatterie für Duschen



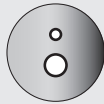
Diagramma di portata
(uscita libera)
Flow diagram
(free exit)
Diagramm der
Durchflussleistung
(freier Ausgang)



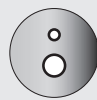
Piastre idonee - Appropriate plates - Passende Platten pag. 108



Art. 1182...



Art. 1192...



Art. 1192/P...



Art. 1192GUAD



Art. 1030CA



Art. 1186...

Design



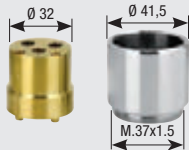
Art.Q
Versione quadrata
Square version
Quadratische Ausführung



Art.MN
Versione minimal ottone cromato o ABS
Minimal design version brass-chrome or ABS
Minimalistische Ausführung Verchromtes Messing oder ABS

kit prolunga sede cartuccia
Extension kit for cartridge seat
Verlängerungsbausatz Kartuschensitz

Art. 600/35



Art. 600/35 SC



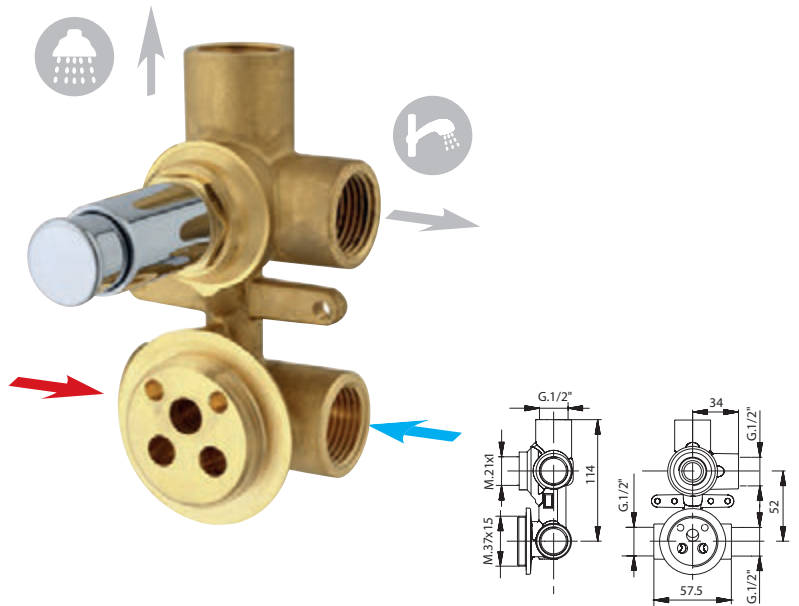
1043/35

1068PRO

con deviatore **click-clack**
with **click-clack** diverter
mit **click-clack**



con deviatore a pulsante
with **push** diverter
mit **Druckknopfumstellung**



(Art. 1502 KS)

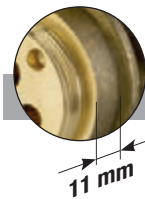


Art. 2182/35 K

(Art. 1502)



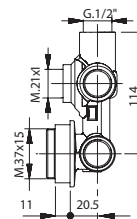
Art. 2182/35



versione prolungata - extended version - Erweiterte

Art. 2182/35 AL K

Art. 2182/35 AL



INSTALLATION Art. 3182CG page 164

Art. 1013/35

Anello sede cartuccia
Cartridge ring seat
Kartuschenringsitz



Art. 1003SF

Cappuccio ABS
ABS cap
ABS-Kappe



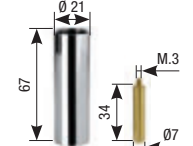
Art. 1004BS

Ghiera
Ring nut
Gewindehülse



Art. 610

Prolunga deviatore
Diverter extension
Verlängerung Umstellventil

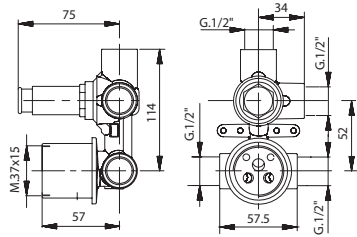


2 exits

∅35



Con anello sede cartuccia
With cartridge ring seat
Mit Kartuschenringsitz



(Art. 1502 KS)



Art. 2192/35 K

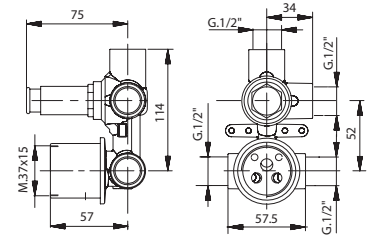
(Art. 1502)



Art. 2192/35



Con cappuccio scorrevole
With sliding sleeve
Mit Schiebehaube



(Art. 1502 KS)



Art. 2192/35 K SC

(Art. 1502)



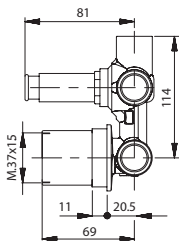
Art. 2192/35 SC

MMX INCASSO
∅35

Version

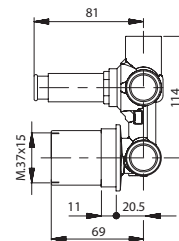
Art. 2192/35 AL K

Art. 2192/35 AL



Art. 2192/35 AL K SC

Art. 2192/35 AL SC



Art. 1468
Anello sede cartuccia
Cartridge ring seat
Kartuschenringsitz



Art. 1465
Cappuccio scorrevole
Sliding sleeve
Schiebehaube



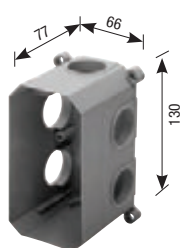
Art. PR42
Protezione mix
Mix protection
Schutzvorrichtung Mixer



Art. PR20
Protezione in plastica
Plastic protection
Kunststoffschutzvorrichtung



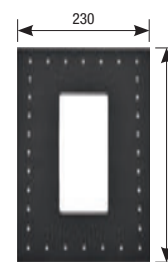
Art. 3182CG
Scatola di assemblaggio
Multipurpose assembling box
Montagegehäuse



Art. 3183
Coperchio scatola
Box cover
Gehäuseabdeckung



Art. 3181ME
Membrana isolante
Insulating membrane
Isolierungsmembran



Art. 3185
Prolunga G. 1/2"
Extension G. 1/2"
Verlängerung mit 1/2"-Drehung



Art. 3181G1/2
Guarnizione G. 1/2"
Gasket G. 1/2"
Dichtung mit 1/2"-Drehung



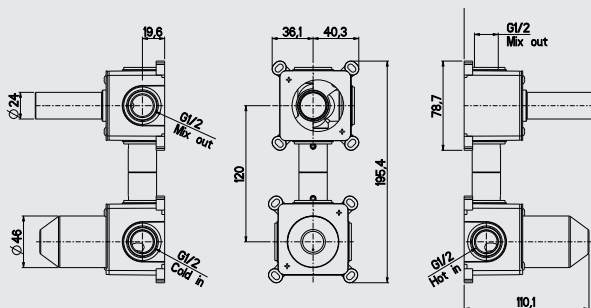
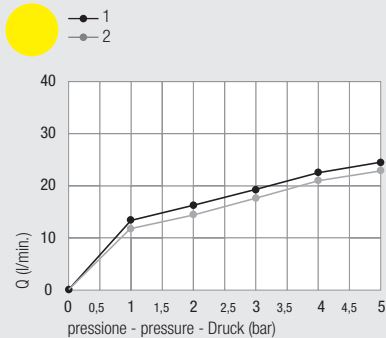
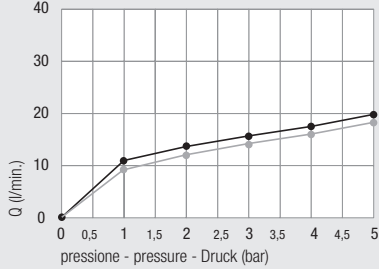
Miscelatore doccia incasso verticale

Concealed vertical shower mixer

Einbau-Mischbatterie für Duschen vertikal

DZR
Available

Diagramma di portata (uscita libera)
Flow diagram (free exit)
Diagramm der Durchflussleistung (freier Ausgang)



Design

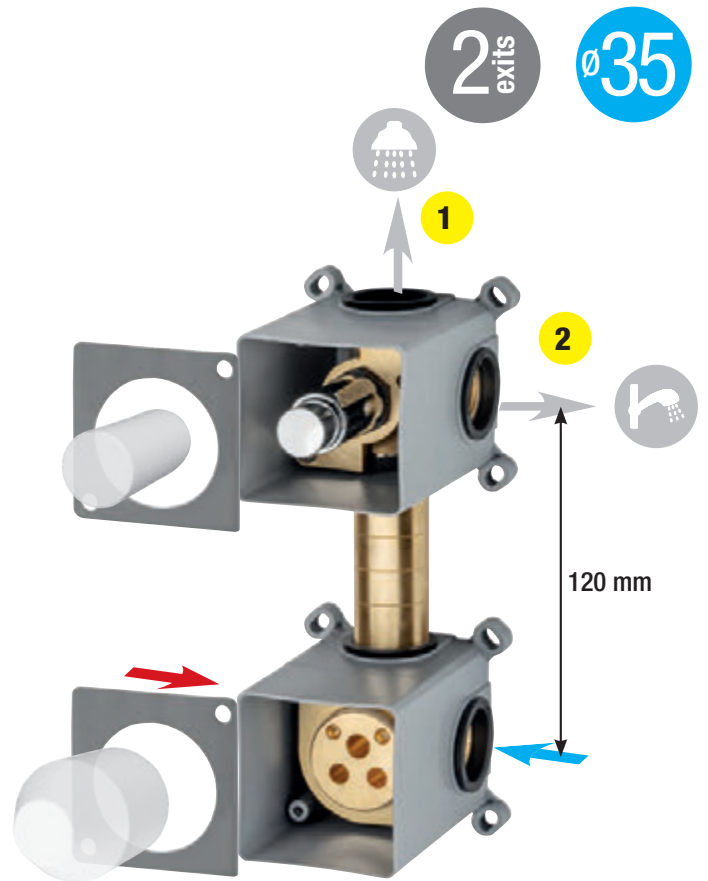


Art.Q
Versione quadrata
Square version
Quadratische Ausführung

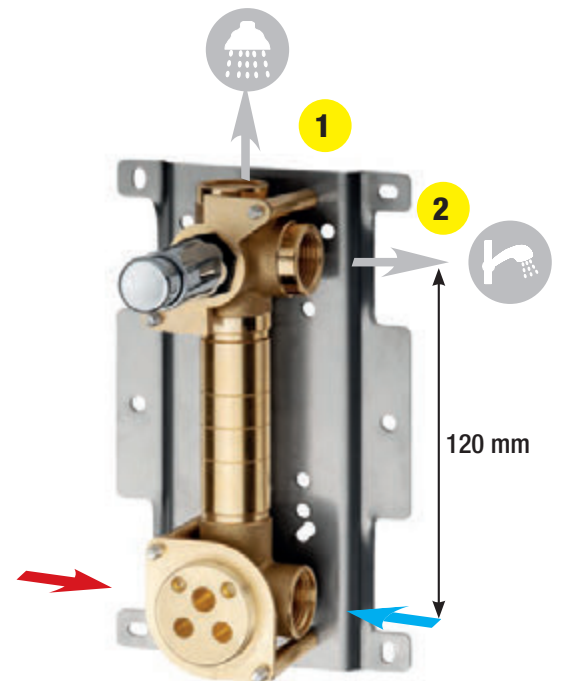
kit prolunga sede cartuccia
Extension kit for cartridge seat
Verlängerungsbausatz Kartuschensitz



con scatola - with box - mit Unterputzdose

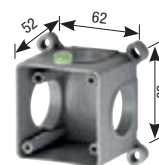


con piastra - with plate - mit Platte



per miscelatore e per deviatore
for mixer and for diverter
für Mischer und für Umsteller

Art. 3195
Scatola di assemblaggio
Multipurpose assembling box
Montagegehäuse



Art. 3196
Piastra copriscatola
Box cover plate
Abdeckplatte des Kastens



Art. PR42
Protezione mix
Mix protection
Schutzvorrichtung Mixer



Art. PR20K
Protezione in plastica
Plastic protection
Kunststoffschutzvorrichtung



con deviatore **click-clack**
with **click-clack diverter**
mit **click-clack**



con deviatore a pulsante
with **push diverter**
mit **Druckknopfumstellung**



(Art. 1502 KS)



Art. 2403-S01K

con **anello sede cartuccia**
with **cartridge ring seat**
mit **Kartuschenringsitz**



Art. 2403-S01KA

con **cappuccio scorrevole**
with **sliding sleeve**
mit **Schiebehaube**



Art. 2403-S01KSC

(Art. 1502)



Art. 2403-S01

Art. 2403-S01A

Art. 2403-S01SC

INSTALLATION next page



(Art. 1502 KS)



Art. 2403-T01K

Art. 2403-T01KA

Art. 2403-T01KSC

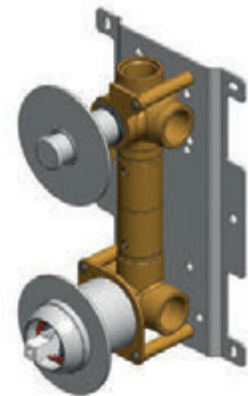
(Art. 1502)



Art. 2403-T01

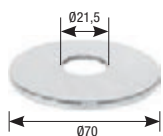
Art. 2403-T01A

Art. 2403-T01SC



Art. 1502ROS

Rosoni h 2 mm
Rosas h 2 mm
Rosas h 2 mm



Art. 1013/35

Anello sede cartuccia
Cartridge ring seat
Kartuschenringsitz

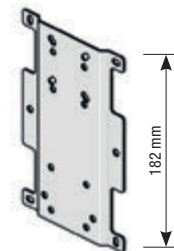


Art. 3185

Prolunga G.1/2"
Extension G.1/2"
Verlängerung mit 1/2"-Drehung



STAFF



Art. 1003SF

Cappuccio ABS
ABS cap
ABS-Kappe



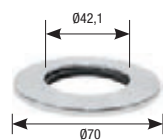
Art. 1004BS

Ghiera
Ring nut
Gewindehülse



Art. 1013/35ROS

Rosoni h 2 mm
Rosas h 2 mm
Rosas h 2 mm



Art. 1468

Anello sede cartuccia
Cartridge ring seat
Kartuschenringsitz



Art. 1465

Cappuccio scorrevole
Sliding sleeve
Schiebehaube



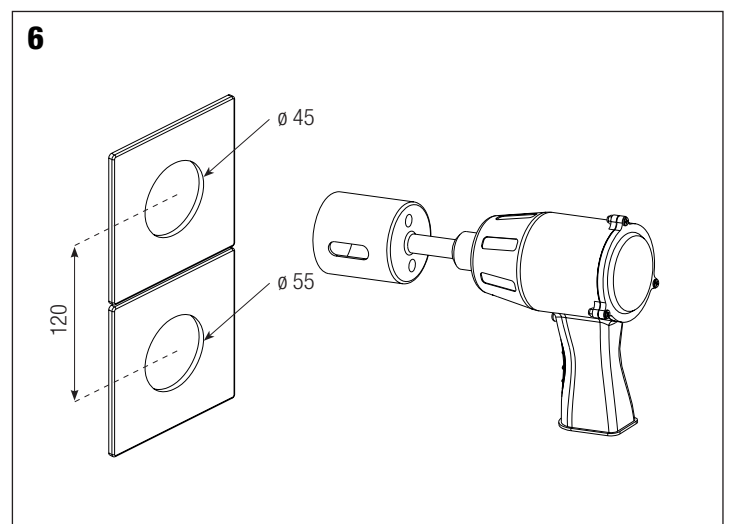
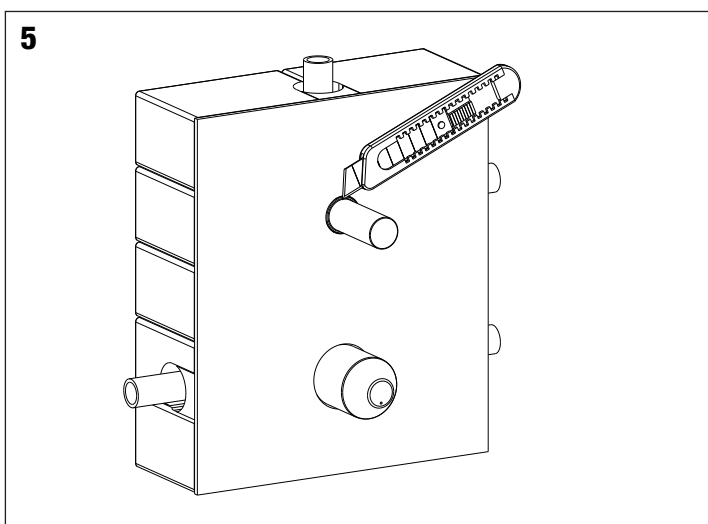
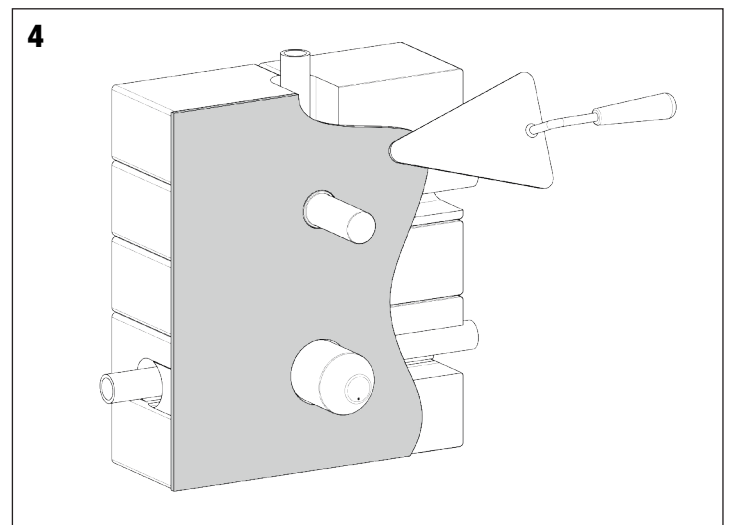
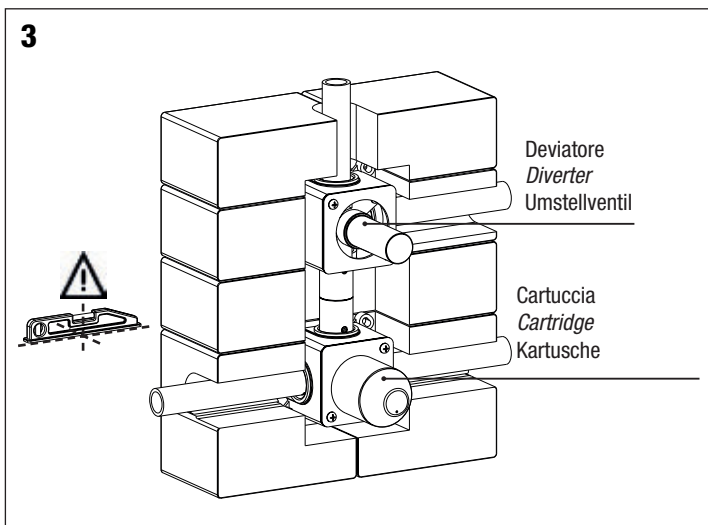
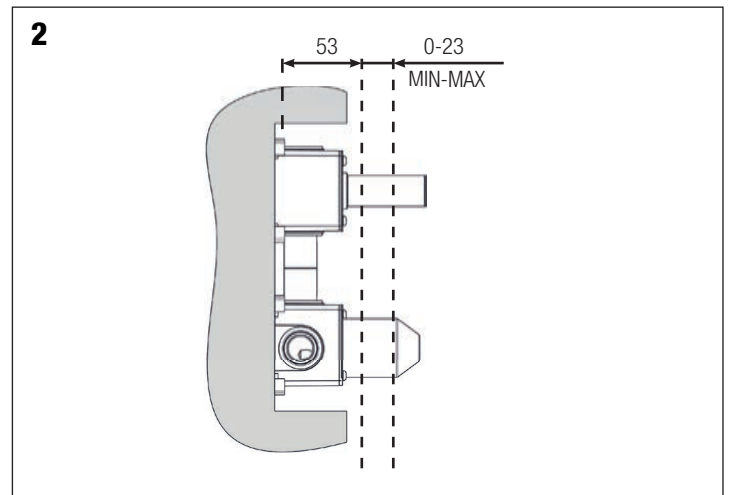
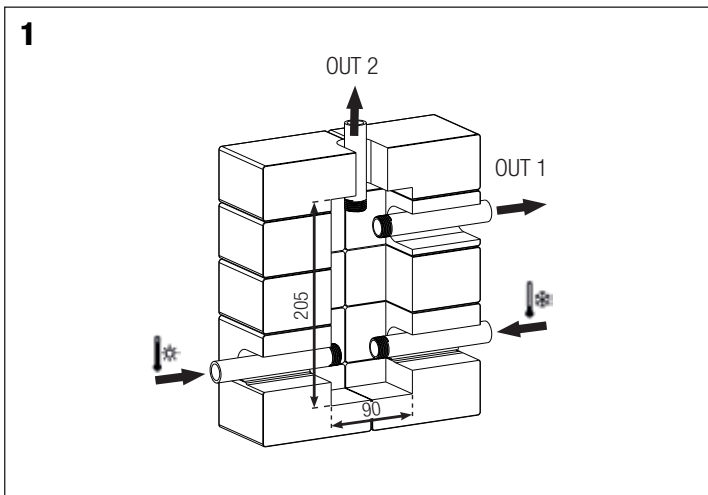
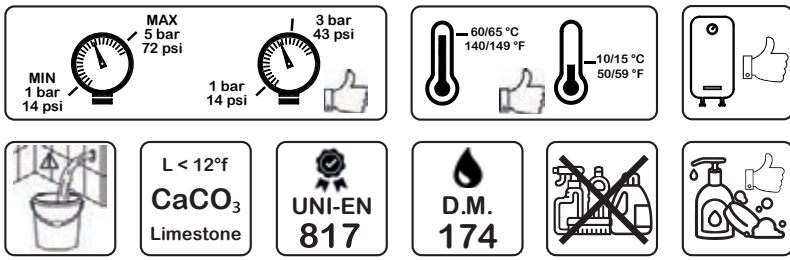
Art. 3181G/2

Guarnizione G.1/2"
Gasket G.1/2"
Dichtung mit 1/2"-Drehung

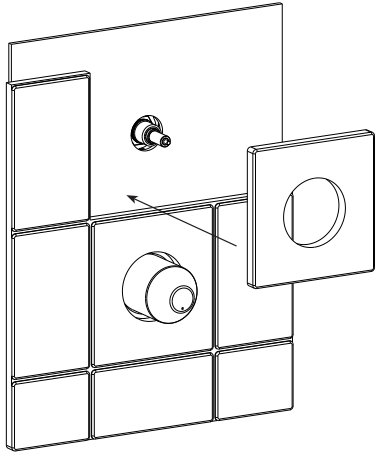


Installazione e manutenzione
Installation and maintenance
Installation und wartung

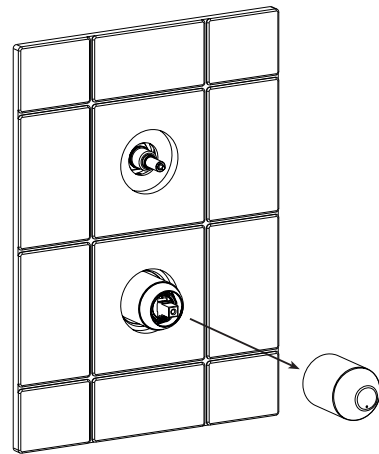
Art. 2403-s01



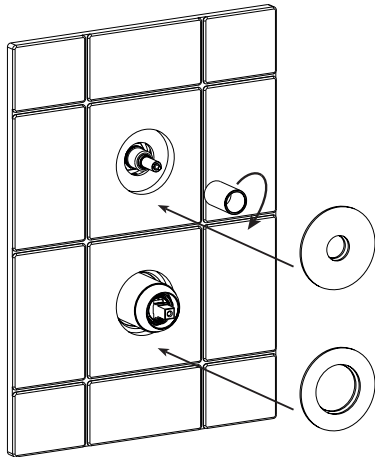
7



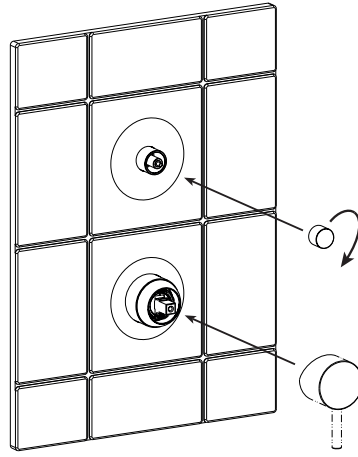
8



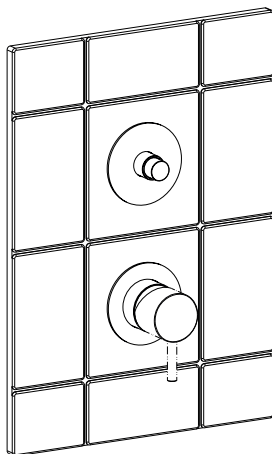
9



10

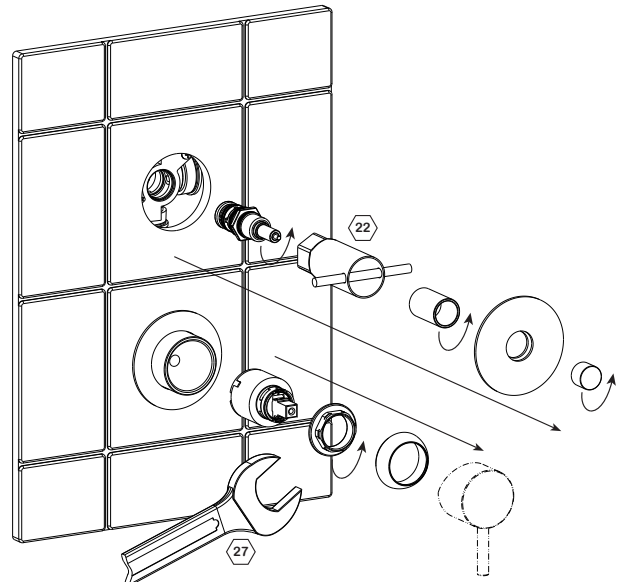


11



Sostituzione delle cartucce - Cartridges replacement

Prima di procedere alla manutenzione o alla sostituzione, chiudere l'acqua della rete idrica.
Turn off the mains water before carrying out maintenance or replacement operations.
Vor dem Austausch oder Wartungsarbeiten das Wasser am Haupthahn abstellen.



Miscelatore doccia incasso orizzontale

Concealed horizontal shower mixer

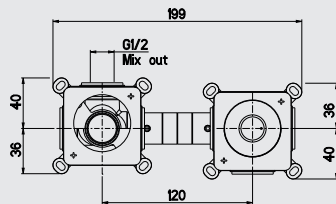
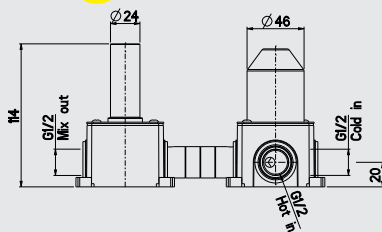
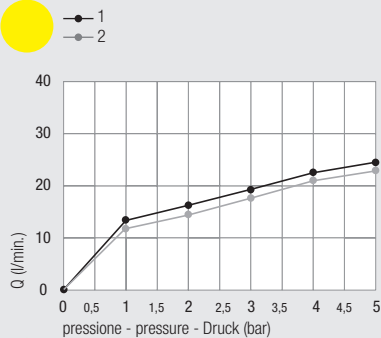
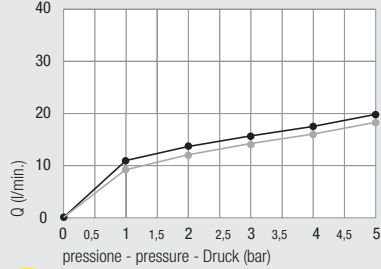
Einbau-Mischbatterie für Duschen horizontal

2 exits

Ø35

DZR
Available

Diagramma di portata (uscita libera)
Flow diagram (free exit)
Diagramm der Durchflussleistung (freier Ausgang)



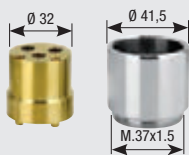
Design



Art.Q
Versione quadrata
Square version
Quadratische Ausführung

kit prolunga sede cartuccia
Extension kit for cartridge seat
Verlängerungsbausatz Kartuschensitz

Art. 600/35



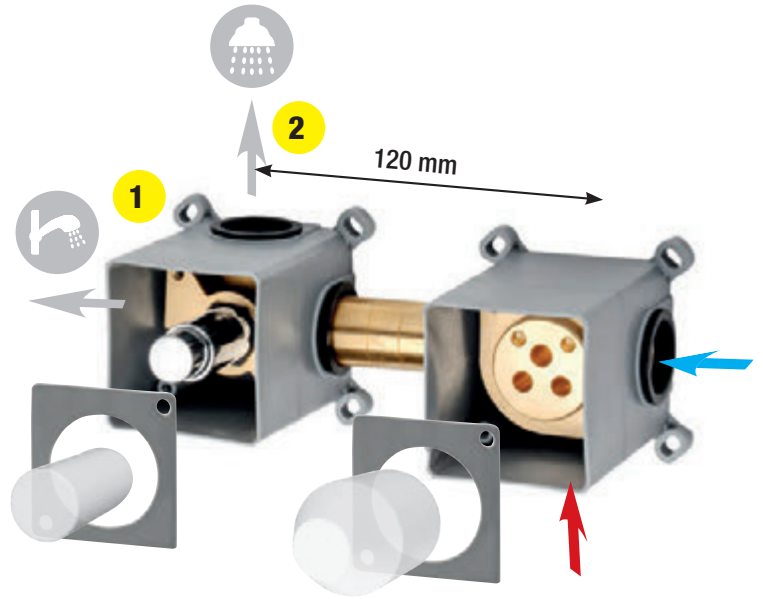
Art. 600/35 SC



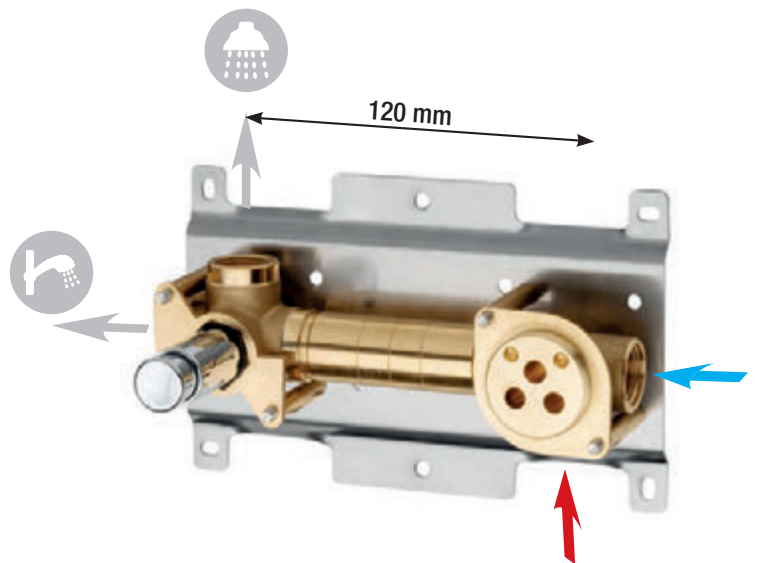
1043/35

1068PRO

con scatola - with box - mit Unterputzdose

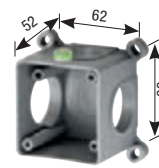


con piastra - with plate - mit Platte



per miscelatore e per deviatore
for mixer and for diverter
für Mischer und für Umsteller

Art. 3195
Scatola di assemblaggio
Multipurpose assembling box
Montagegehäuse



Art. 3196
Piastra copriscatola
Box cover plate
Abdeckplatte des Kastens



Art. PR42
Protezione mix
Mix protection
Schutzvorrichtung Mixer



Art. PR20K
Protezione in plastica
Plastic protection
Kunststoffschutzvorrichtung



con deviatore **click-clack**
with **click-clack diverter**
mit **click-clack**



con deviatore a pulsante
with **push diverter**
mit **Druckknopfumstellung**



(Art. 1502 KS)



Art. 2403-Z01K

con **anello sede cartuccia**
with **cartridge ring seat**
mit **Kartuschenringsitz**



Art. 2403-Z01KA

con **cappuccio scorrevole**
with **sliding sleeve**
mit **Schiebehaube**



Art. 2403-Z01KSC

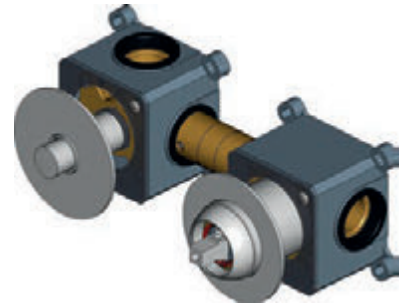
(Art. 1502)



Art. 2403-Z01

Art. 2403-Z01A

Art. 2403-Z01SC



INSTALLATION next page

(Art. 1502 KS)



Art. 2403-X01K

Art. 2403-X01KA

Art. 2403-X01KSC

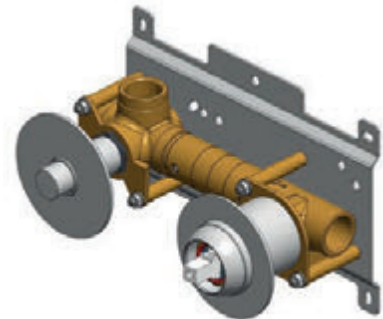
(Art. 1502)



Art. 2403-X01

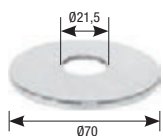
Art. 2403-X01A

Art. 2403-X01SC



Art. 1502ROS

Rosoni h 2 mm
Rosas h 2 mm
Rosas h 2 mm



Art. 1013/35

Anello sede cartuccia
Cartridge ring seat
Kartuschenringsitz

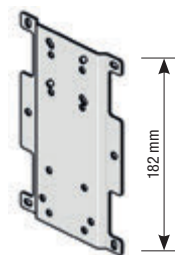


Art. 3185

Prolunga G.1/2"
Extension G.1/2"
Verlängerung mit 1/2"-Drehung



STAFF



Art. 1003SF

Cappuccio ABS
ABS cap
ABS-Kappe



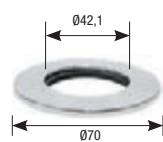
Art. 1004BS

Ghiera
Ring nut
Gewindehülse



Art. 1013/35ROS

Rosoni h 2 mm
Rosas h 2 mm
Rosas h 2 mm



Art. 1468

Anello sede cartuccia
Cartridge ring seat
Kartuschenringsitz



Art. 1465

Cappuccio scorrevole
Sliding sleeve
Schiebehaube



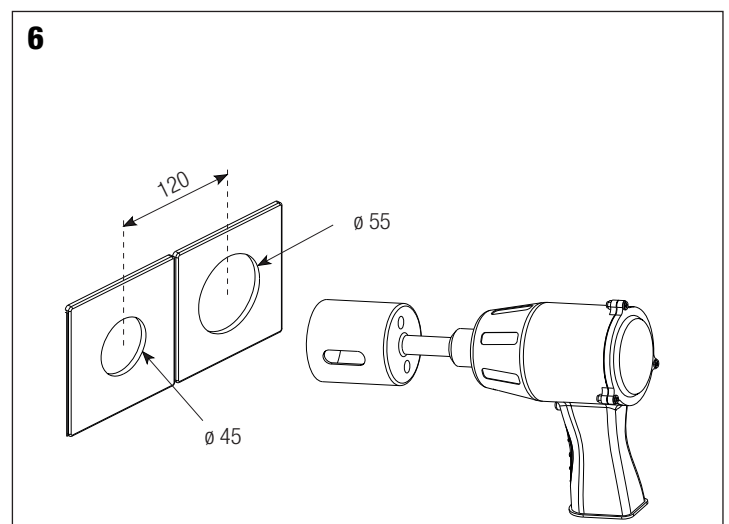
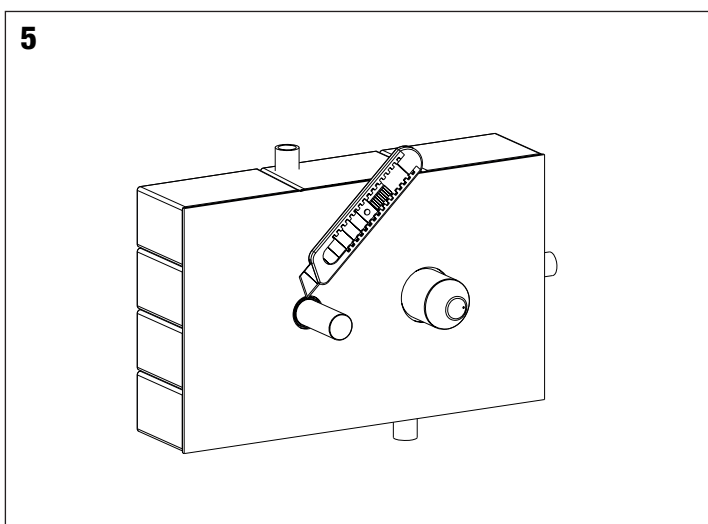
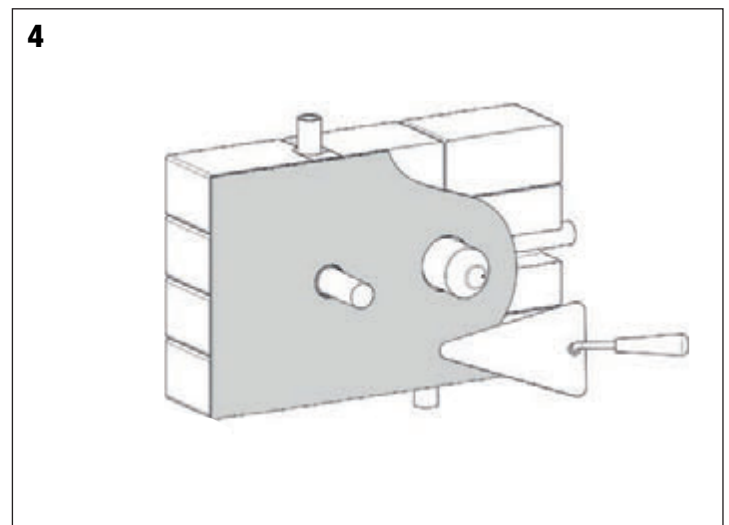
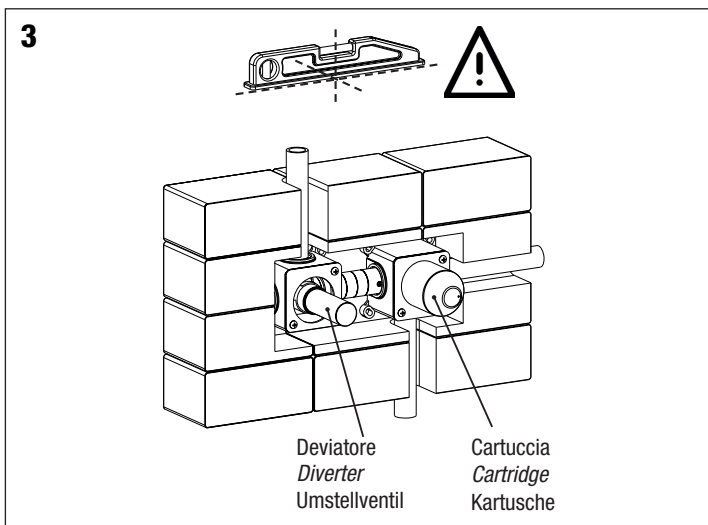
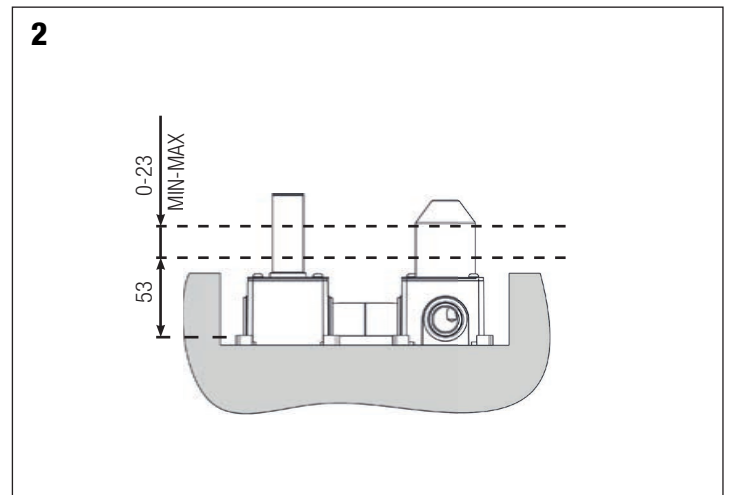
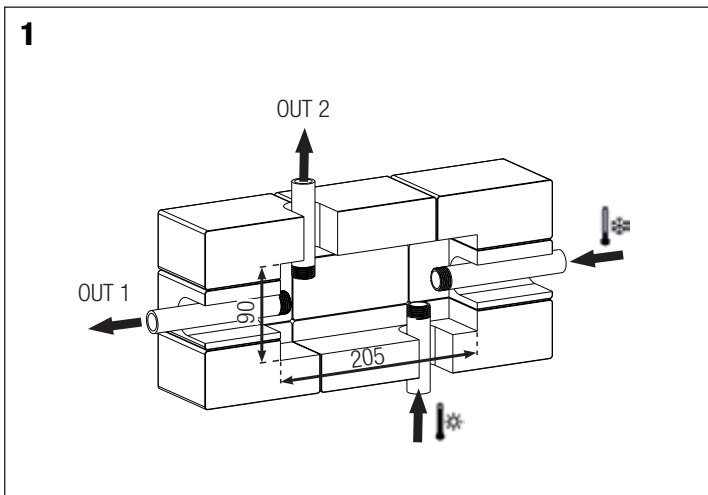
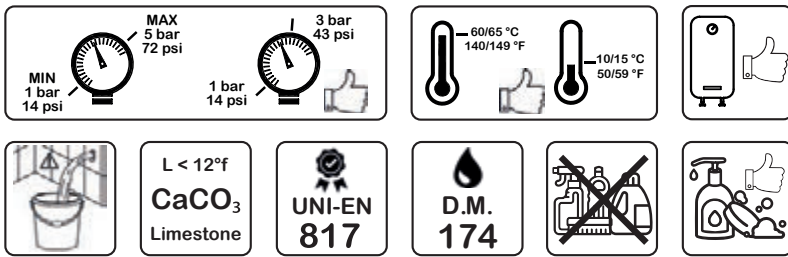
Art. 3181G1/2

Guarnizione G.1/2"
Gasket G.1/2"
Dichtung mit 1/2"-Drehung

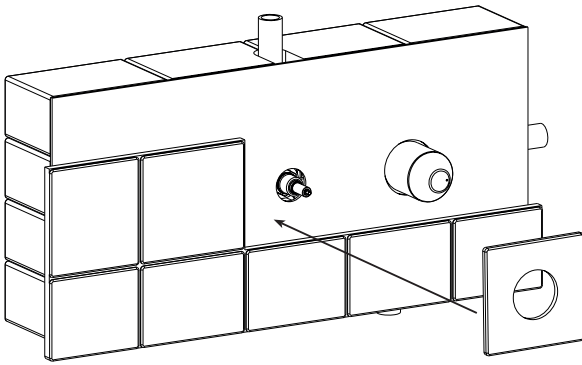


Installazione e manutenzione
Installation and maintenance
Installation und wartung

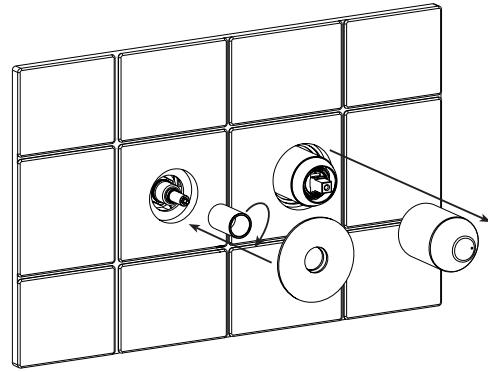
Art. 2403-z01



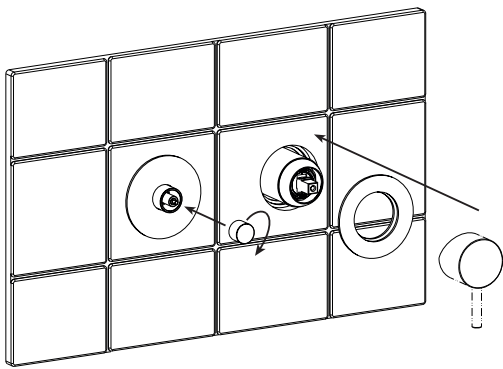
7



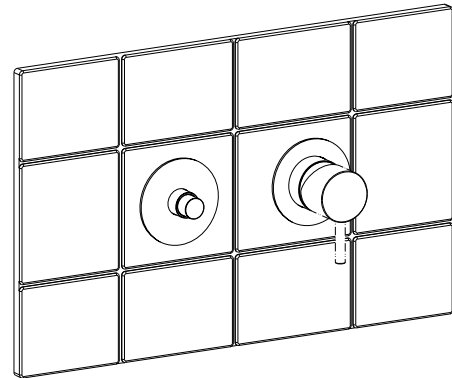
8



9

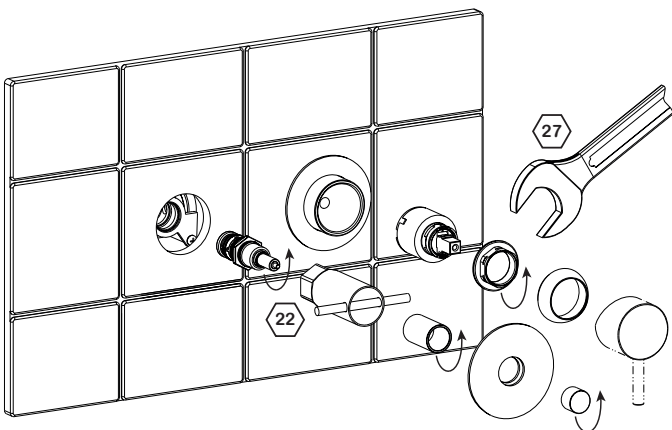


10



Sostituzione delle cartucce - Cartridges replacement

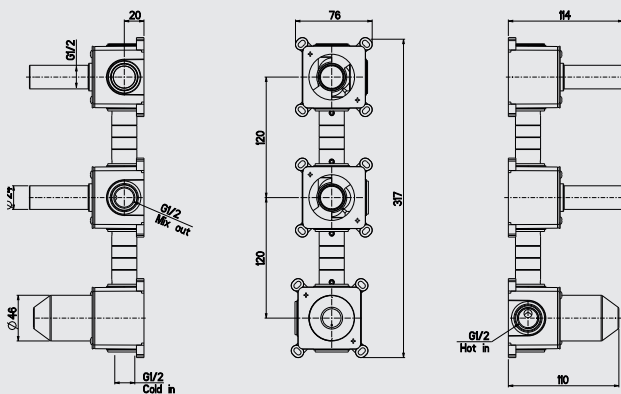
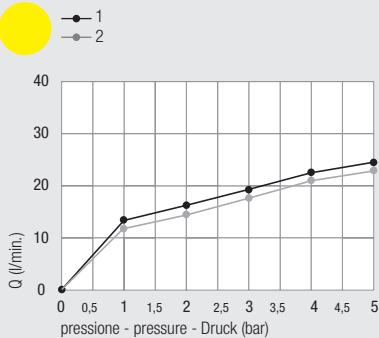
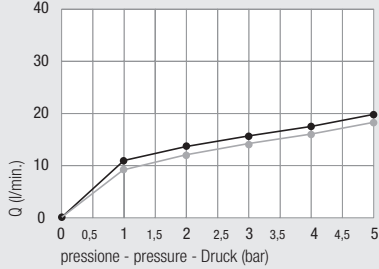
Prima di procedere alla manutenzione o alla sostituzione, chiudere l'acqua della rete idrica.
Turn off the mains water before carrying out maintenance or replacement operations.
Vor dem Austausch oder Wartungsarbeiten das Wasser am Haupthahn abstellen.



Miscelatore doccia incasso orizzontale con presa acqua e supporto doccia *Concealed horizontal shower mixer with water connection and shower bracket* Einbau-Mischbatterie für Duschen horizontal mit Wasseranschluss und Duschalterung

DZR
Available

Diagramma di portata (uscita libera)
Flow diagram (free exit)
 Diagramm der Durchflussleistung (freier Ausgang)



Design

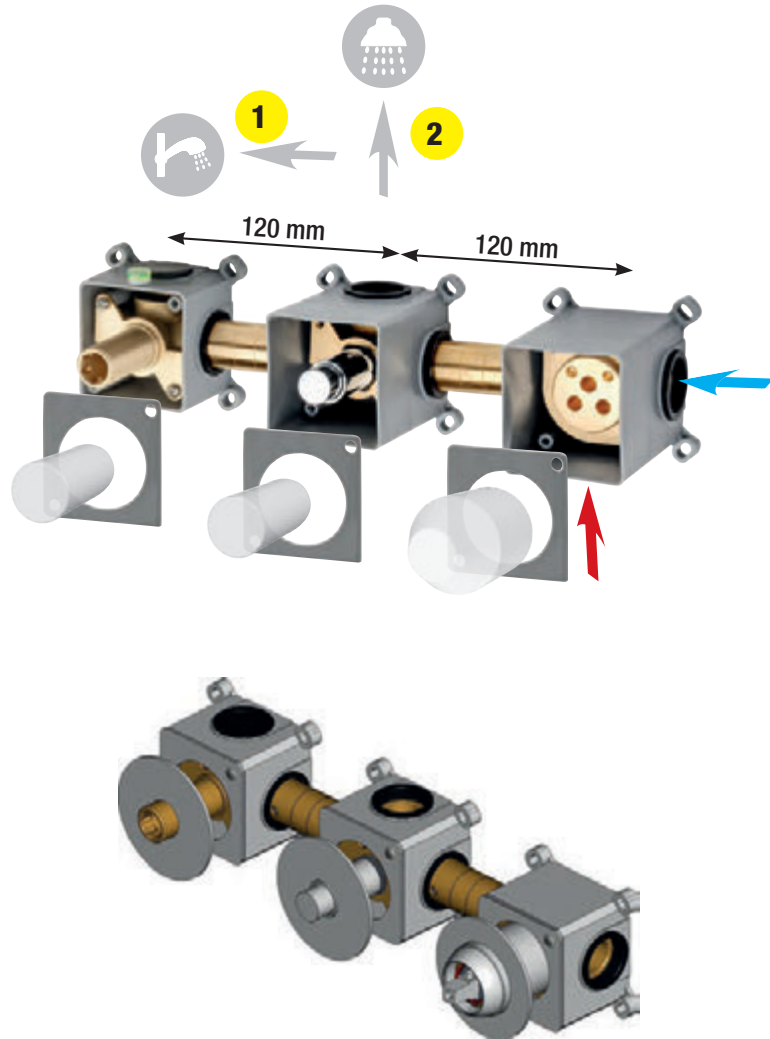


Art.Q
 Versione quadrata
Square version
 Quadratische Ausführung

kit prolunga sede cartuccia
Extension kit for cartridge seat
 Verlängerungsbausatz Kartuschensitz

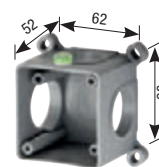


CON scatola - with box - mit Unterputzdose



per miscelatore e per deviatore
for mixer and for diverter
 für Mischer und für Umsteller

Art. 3195
 Scatola di assemblaggio
Multipurpose assembling box
 Montagegehäuse



Art. 3196
 Piastra copriscatola
Box cover plate
 Abdeckplatte des Kastens



Art. PR42
 Protezione mix
Mix protection
 Schutzvorrichtung Mixer



Art. PR20K
 Protezione in plastica
Plastic protection
 Kunststoffschutzvorrichtung



2 exits

Ø35

con deviatore **click-clack**
with **click-clack diverter**
mit **click-clack**



con deviatore a pulsante
with **push diverter**
mit **Druckknopfumstellung**



(Art. 1502 KS)



(Art. 1502)



Art. 2403-Y11K



Art. 2403-Y11KA



Art. 2403-Y11KSC



Art. 2403-Y11

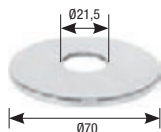
Art. 2403-Y11A

Art. 2403-Y11SC

INSTALLATION next page

Art. 1502ROS

Rosoni h 2 mm
Rosas h 2 mm
Rosas h 2 mm



Art. 1013/35

Anello sede cartuccia
Cartridge ring seat
Kartuschenringsitz

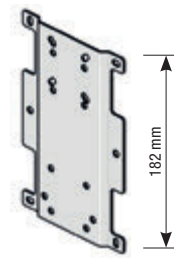


Art. 3185

Prolunga G.1/2"
Extension G.1/2"
Verlängerung mit 1/2"-Drehung

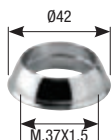


STAFF



Art. 1003SF

Cappuccio ABS
ABS cap
ABS-Kappe



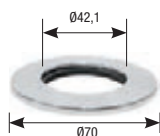
Art. 1004BS

Ghiera
Ring nut
Gewindehülse



Art. 1013/35ROS

Rosoni h 2 mm
Rosas h 2 mm
Rosas h 2 mm



Art. 1468

Anello sede cartuccia
Cartridge ring seat
Kartuschenringsitz



Art. 1465

Cappuccio scorrevole
Sliding sleeve
Schiebehaube



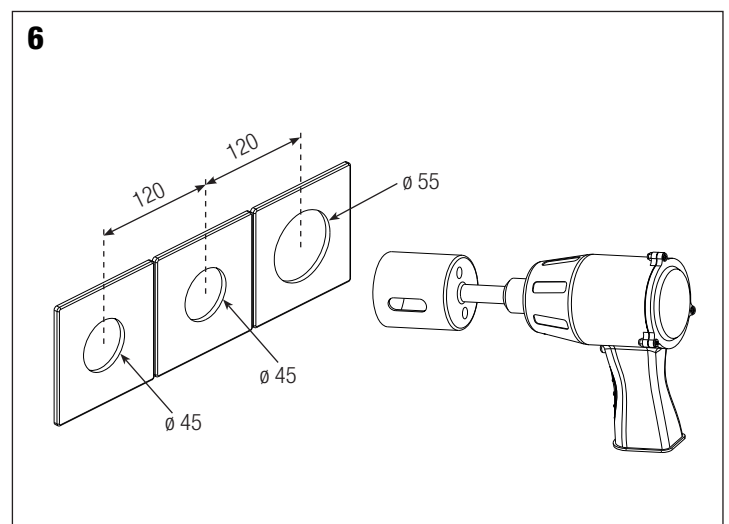
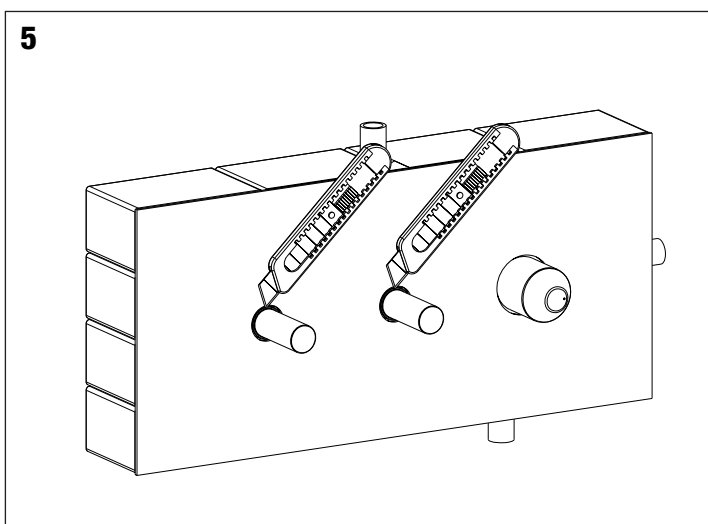
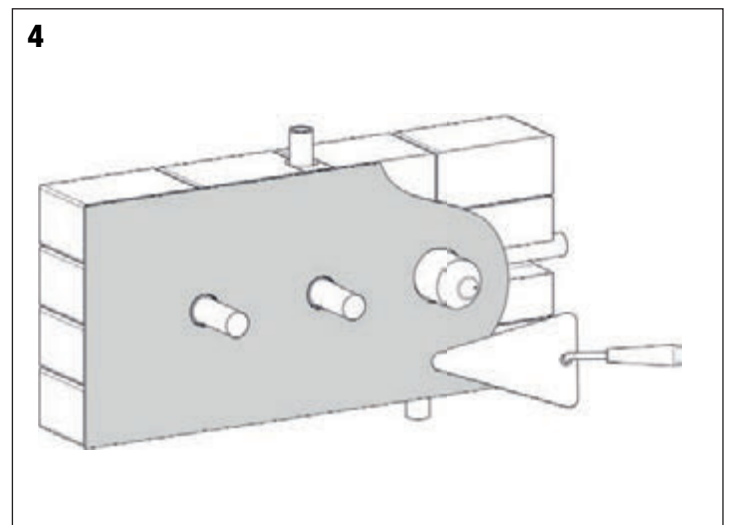
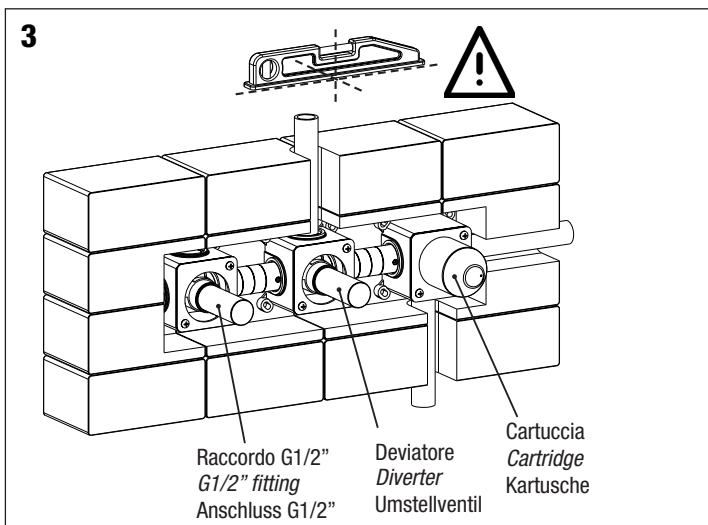
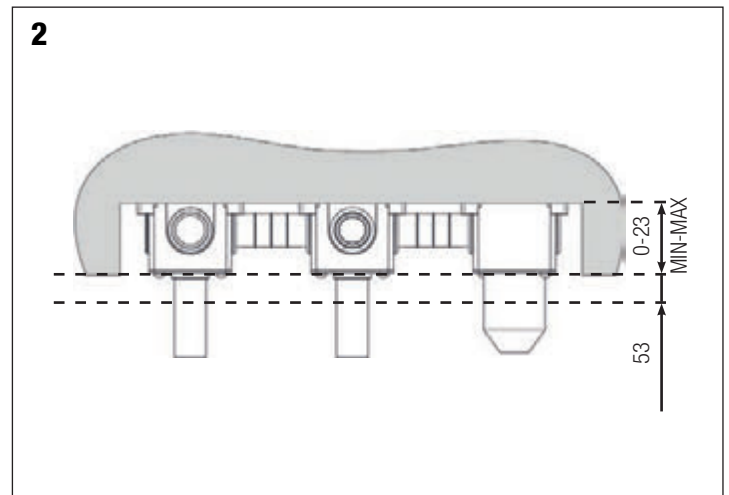
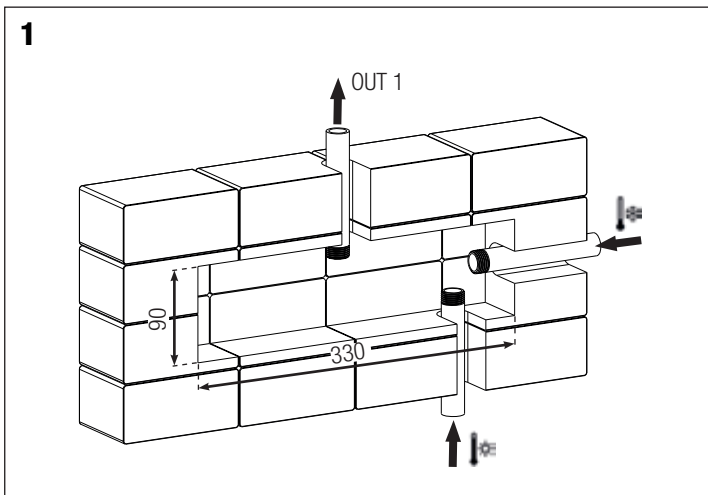
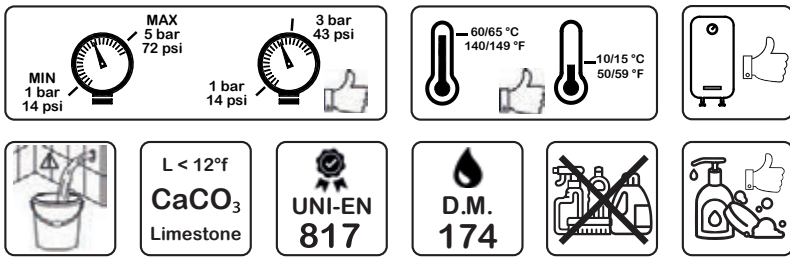
Art. 3181G1/2

Guarnizione G.1/2"
Gasket G.1/2"
Dichtung mit 1/2"-Drehung

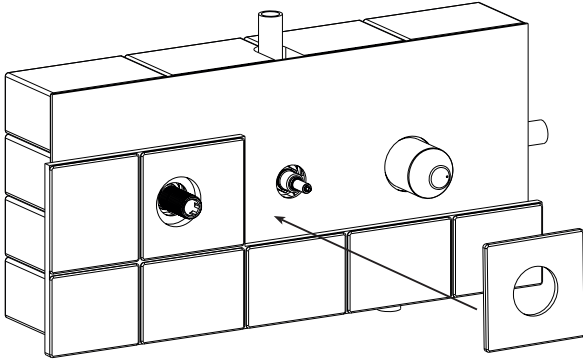


Installazione e manutenzione
Installation and maintenance
Installation und wartung

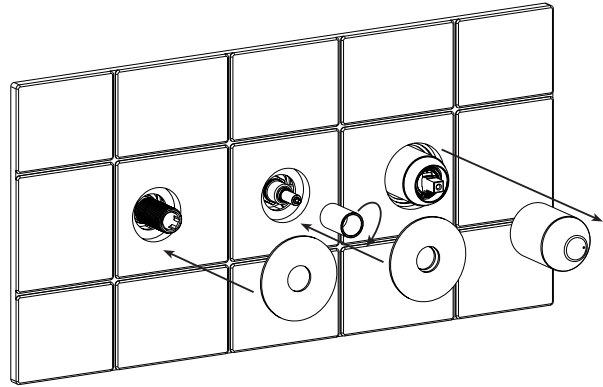
Art. 2403-Y11



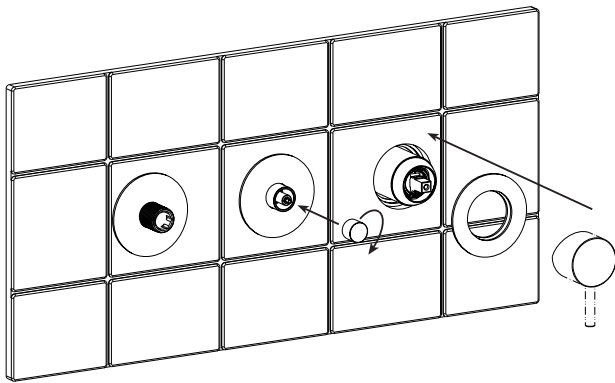
7



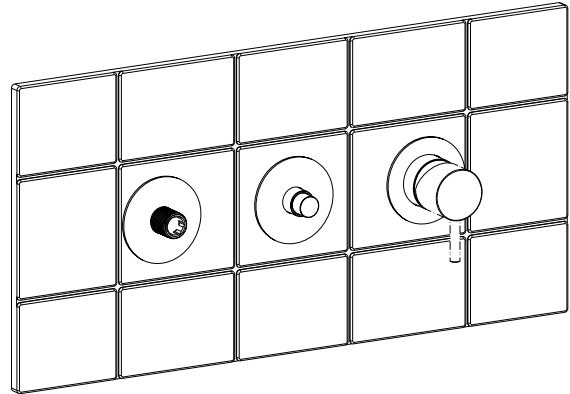
8



9

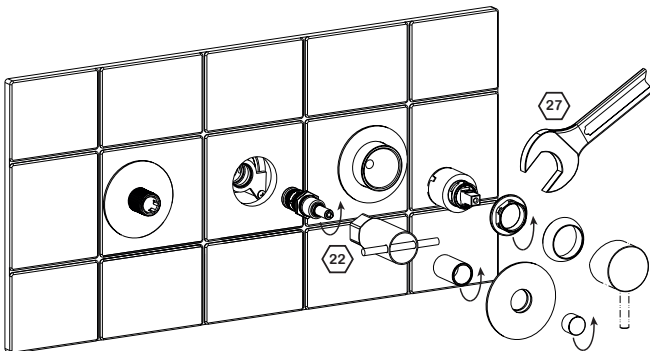


10



Sostituzione delle cartucce - Cartridges replacement

Prima di procedere alla manutenzione o alla sostituzione, chiudere l'acqua della rete idrica.
Turn off the mains water before carrying out maintenance or replacement operations.
Vor dem Austausch oder Wartungsarbeiten das Wasser am Haupthahn abstellen.

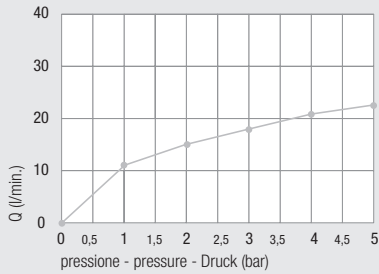


Miscelatore doccia incasso Concealed shower mixer Einbau-Mischbatterie für Duschen



Diagramma di portata
(uscita libera)
Flow diagram
(free exit)

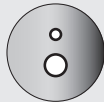
Diagramm der
Durchflussleistung
(freier Ausgang)



Piastre idonee - Appropriate plates - Passende Platten pag. 108



Art. 1182...



Art. 1192...



Art. 1192/P...



Art. 1192GUAD



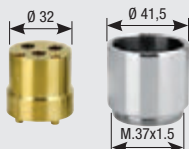
Art. 1030CA



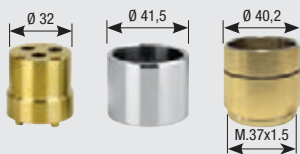
Art. 1186...

kit prolunga sede cartuccia
Extension kit for cartridge seat
Verlängerungsbausatz Kartuschensitz

Art. 600/35



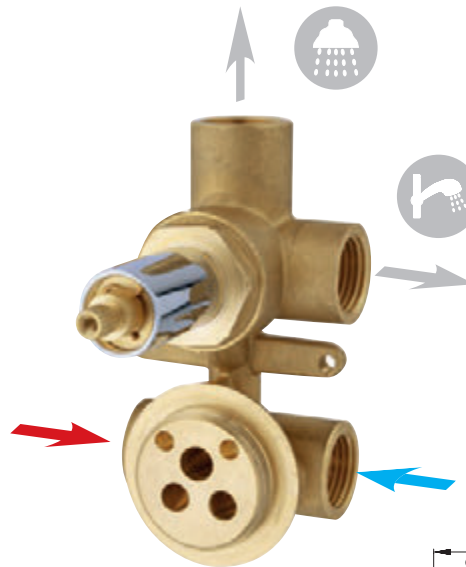
Art. 600/35 SC



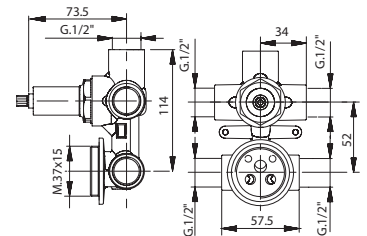
con deviatore **ceramico**
with **ceramic diverter**
Keramik-Umstellventil



Art. 2001/90FA

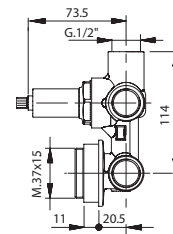


Art. 2182/35CER



versione prolungata - extended version - Erweiterte V

Art. 2182/35CER AL



INSTALLATION Art. 3182CG page 164

Art. 1013/35

Anello sede cartuccia
Cartridge ring seat
Kartuschenringsitz



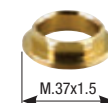
Art. 1003SF

Cappuccio ABS
ABS cap
ABS-Kappe



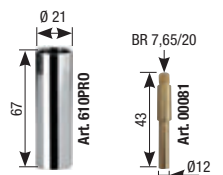
Art. 1004BS

Ghiera
Ring nut
Gewindehülse

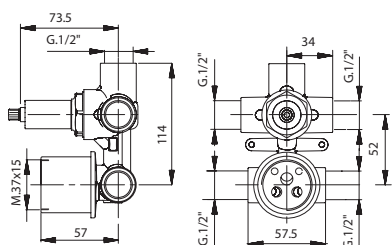


Art. 630

Prolunga deviatore
Diverter extension
Verlängerung Umstellventil

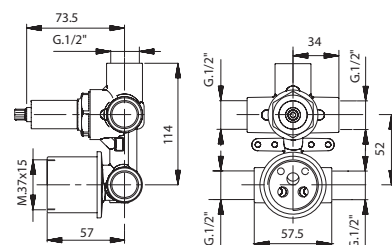


Con anello sede cartuccia
With cartridge ring seat
 Mit Kartuschenringsitz



Art. 2192/35CER

Con cappuccio scorrevole
With sliding sleeve
 Mit Schiebehaube

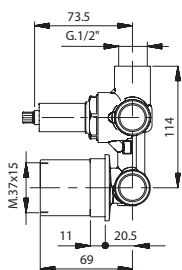


Art. 2192/35CER SC

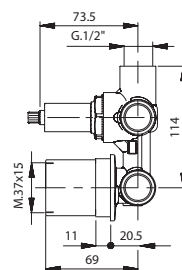
ersion

MX INCASSO
 035

Art. 2192/35CER AL



Art. 2192/35CER AL SC



Art. 1468
 Anello sede cartuccia
Cartridge ring seat
 Kartuschenringsitz



Art. 1465
 Cappuccio scorrevole
Sliding sleeve
 Schiebehaube



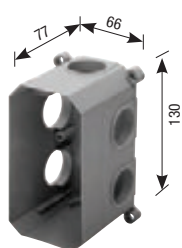
Art. PR42
 Protezione mix
Mix protection
 Schutzvorrichtung Mixer



Art. PR20
 Protezione in plastica
Plastic protection
 Kunststoffschutzvorrichtung



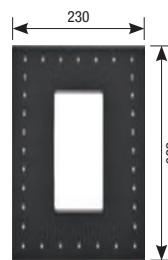
Art. 3182CG
 Scatola di assemblaggio
Multipurpose assembling box
 Montagegehäuse



Art. 3183
 Coperchio scatola
Box cover
 Gehäuseabdeckung



Art. 3181ME
 Membrana isolante
Insulating membrane
 Isolierungsmembran



Art. 3185
 Prolunga G. 1/2\"/>
Extension G. 1/2\"
 Verlängerung mit 1/2\"-Drehung



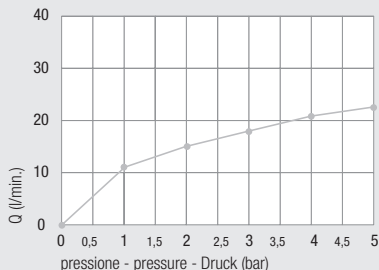
Art. 3181G1/2
 Guarnizione G. 1/2\"/>
Gasket G. 1/2\"
 Dichtung mit 1/2\"-Drehung



Miscelatore doccia incasso Concealed shower mixer Einbau-Mischbatterie für Duschen



Diagramma di portata
(uscita libera)
Flow diagram
(free exit)
Diagramm der
Durchflussleistung
(freier Ausgang)



Piastre idonee - Appropriate plates - Passende Platten pag. 108



Art. 1182...



Art. 1192...



Art. 1192/P...



Art. 1192GUAD



Art. 1030CA



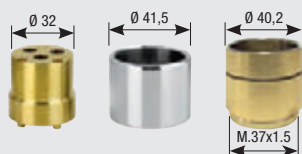
Art. 1186...

kit prolunga sede cartuccia
Extension kit for cartridge seat
Verlängerungsbausatz Kartuschensitz

Art. 600/35



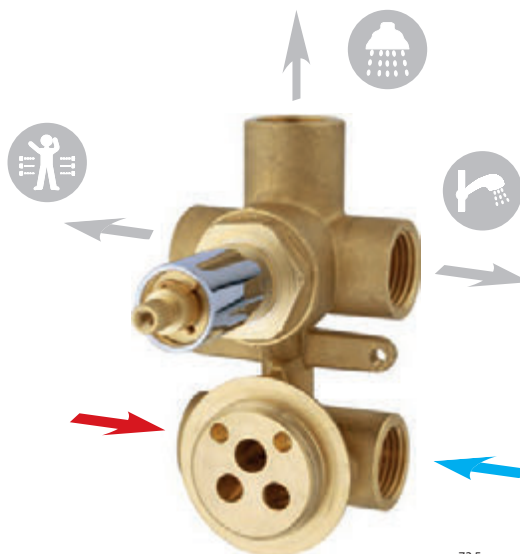
Art. 600/35 SC



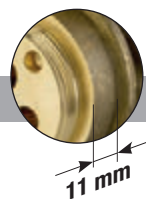
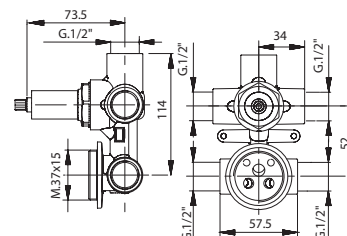
con deviatore ceramico
with ceramic diverter
Keramik-Umstellventil



Art. 2001FA

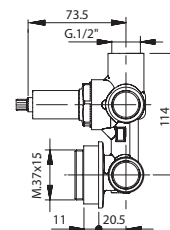


Art. 2180/35CER



versione prolungata - extended version - Erweiterte V

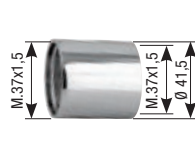
Art. 2180/35CER AL



INSTALLATION Art. 3182CG page 164

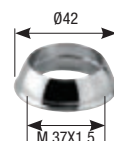
Art. 1013/35

Anello sede cartuccia
Cartridge ring seat
Kartuschenringsitz



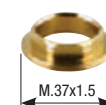
Art. 1003SF

Cappuccio ABS
ABS cap
ABS-Kappe



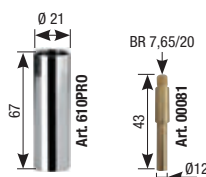
Art. 1004BS

Ghiera
Ring nut
Gewindehülse



Art. 630

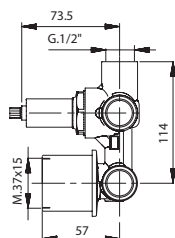
Prolunga deviatore
Diverter extension
Verlängerung Umstellventil



Con anello sede cartuccia
With cartridge ring seat
 Mit Kartuschenringsitz



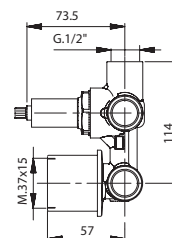
Art. 2190/35CER



Con cappuccio scorrevole
With sliding sleeve
 Mit Schiebehaube



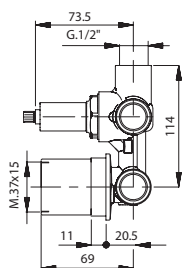
Art. 2190/35CER SC



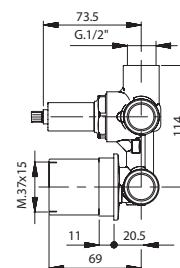
ersion

MIX INCASSO
 035

Art. 2190/35CER AL



Art. 2190/35CER AL SC



Art. 1468
 Anello sede cartuccia
Cartridge ring seat
 Kartuschenringsitz



Art. 1465
 Cappuccio scorrevole
Sliding sleeve
 Schiebehaube



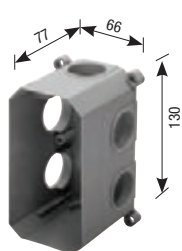
Art. PR42
 Protezione mix
Mix protection
 Schutzvorrichtung Mixer



Art. PR20
 Protezione in plastica
Plastic protection
 Kunststoffschutzvorrichtung



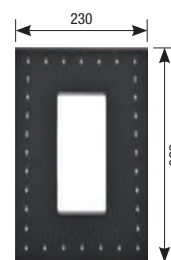
Art. 3182CG
 Scatola di assemblaggio
Multipurpose assembling box
 Montagegehäuse



Art. 3183
 Coperchio scatola
Box cover
 Gehäuseabdeckung



Art. 3181ME
 Membrana isolante
Insulating membrane
 Isolierungsmembran



Art. 3185
 Prolunga G. 1/2"
Extension G. 1/2"
 Verlängerung mit 1/2"-Drehung



Art. 3181G1/2
 Guarnizione G. 1/2"
Gasket G. 1/2"
 Dichtung mit 1/2"-Drehung



Miscelatore doccia incasso verticale

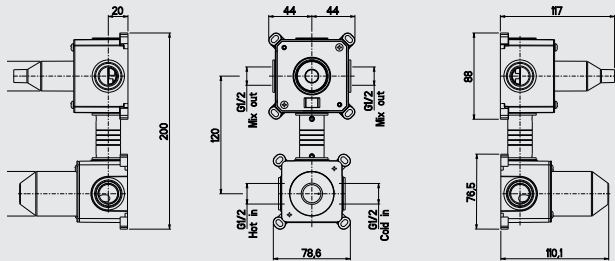
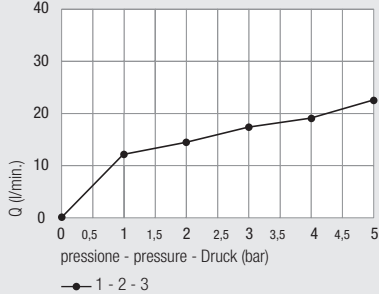
Concealed vertical shower mixer

Einbau-Mischbatterie für Duschen vertikal

2/3 exits
 Ø35

DZR
 Available

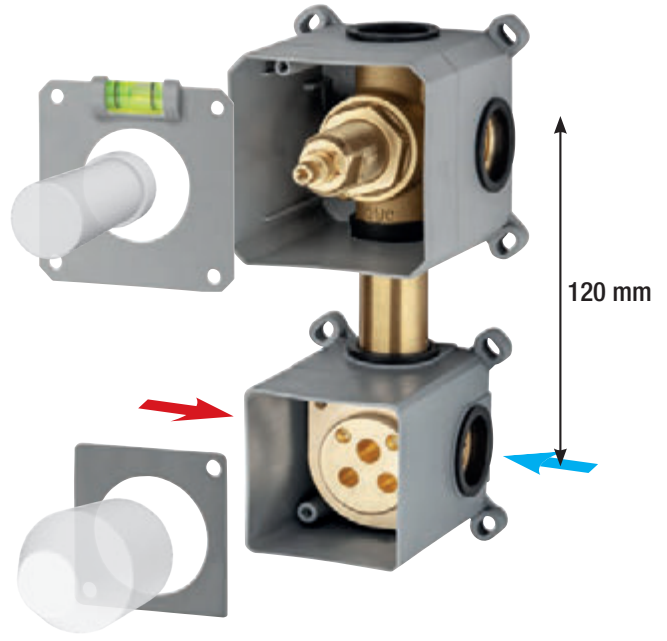
Diagramma di portata
 (uscita libera)
*Flow diagram
 (free exit)*
 Diagramm der
 Durchflussleistung
 (freier Ausgang)



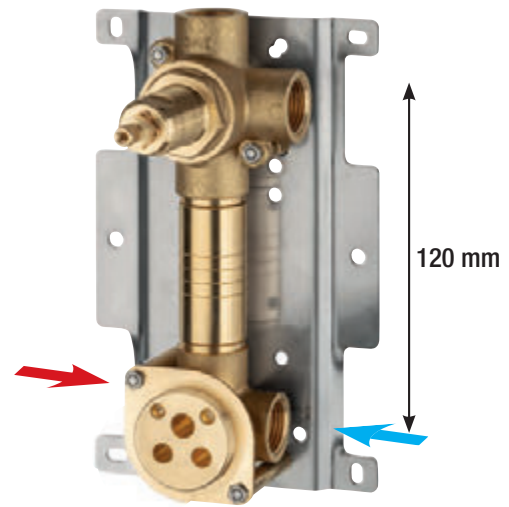
kit prolunga sede cartuccia
Extension kit for cartridge seat
 Verlängerungsbausatz Kartuschensitz



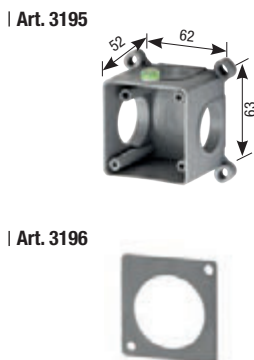
con scatola - with box - mit Unterputzdose



con piastra - with plate - mit Platte



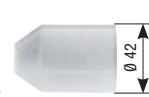
per miscelatore
 for mixer
 für Mischer



per deviatore
 for diverter
 für Umsteller



Art. PR42
 Protezione mix
Mix protection
 Schutzvorrichtung Mixer



Art. PR22/19
 Protezione coprifiletto
Thread protection
 Gewindeabdeckungsschutz



Art. 1013/35
 Anello sede cartuccia
Cartridge ring seat
 Kartuschenringsitz



Art. 1468
 Anello sede cartuccia
Cartridge ring seat
 Kartuschenringsitz



Art. 1003SF
 Cappuccio ABS
ABS cap
 ABS-Kappe



Art. 1004BS
 Ghiera
Ring nut
 Gewindehülse



Art. 1465
 Cappuccio scorrevole
Sliding sleeve
 Schiebahaube



con deviatore **ceramico**
with **ceramic diverter**
Keramik-Umstellventil



Art. 2001/90FA



Art. 2001FA

con **anello sede cartuccia**
with **cartridge ring seat**
mit **Kartuschenringsitz**



Art. 2403-G51

Art. 2403-H51

Art. 2403-F51



Art. 2403-G51A

Art. 2403-H51A

Art. 2403-F51A

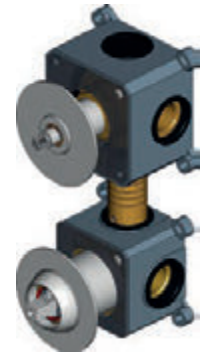
con **cappuccio scorrevole**
with **sliding sleeve**
mit **Schiebehaube**



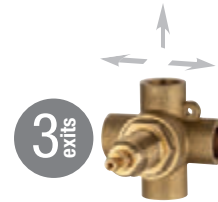
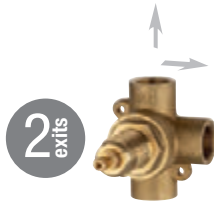
Art. 2403-G51SC

Art. 2403-H51SC

Art. 2403-F51SC



INSTALLATION next page



con **anello sede cartuccia**
with **cartridge ring seat**
mit **Kartuschenringsitz**



Art. 2403-Q51

Art. 2403-R51

Art. 2403-P51



Art. 2403-Q51A

Art. 2403-R51A

Art. 2403-P51A

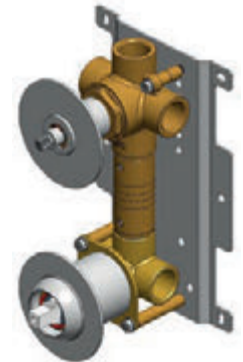
con **cappuccio scorrevole**
with **sliding sleeve**
mit **Schiebehaube**



Art. 2403-Q51SC

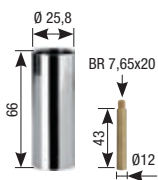
Art. 2403-R51SC

Art. 2403-P51SC

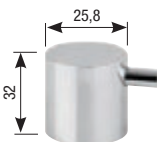


MIX INCASSO
035

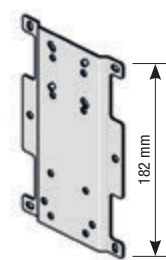
Art. 640
Prolunga deviatore
Diverter extension
Verlängerung
Umstellventil



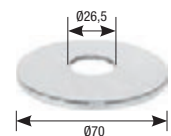
Art. 00120
Maniglia deviatore
Diverter handle
Umstellgriff



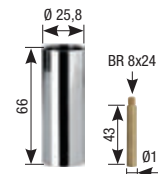
STAFF



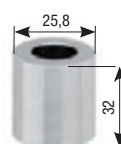
Art. 00080ROS
Rosoni h 2 mm
Rosas h 2 mm
Rosas h 2 mm



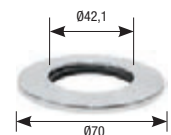
Art. 640A
Prolunga deviatore
Diverter extension
Verlängerung
Umstellventil



Art. 00080
Coprifiletto deviatore cromato
Diverter cover thread
Verchromte Gewindeabdeckung
Umstellventil



Art. 1013/35ROS
Rosoni h 2 mm
Rosas h 2 mm
Rosas h 2 mm



Art. 3185
Prolunga G. 1/2"
Extension G. 1/2"
Verlängerung mit 1/2"-Drehung

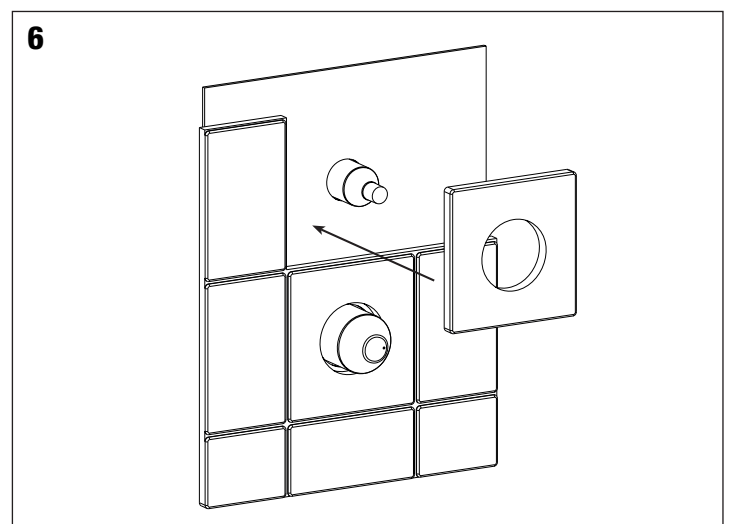
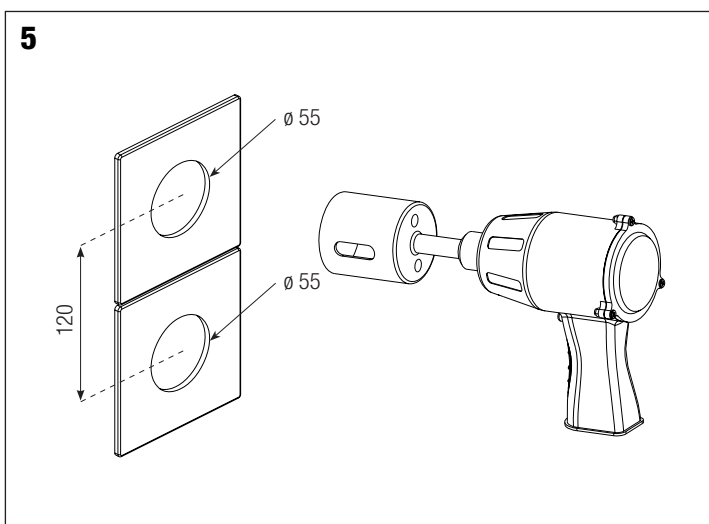
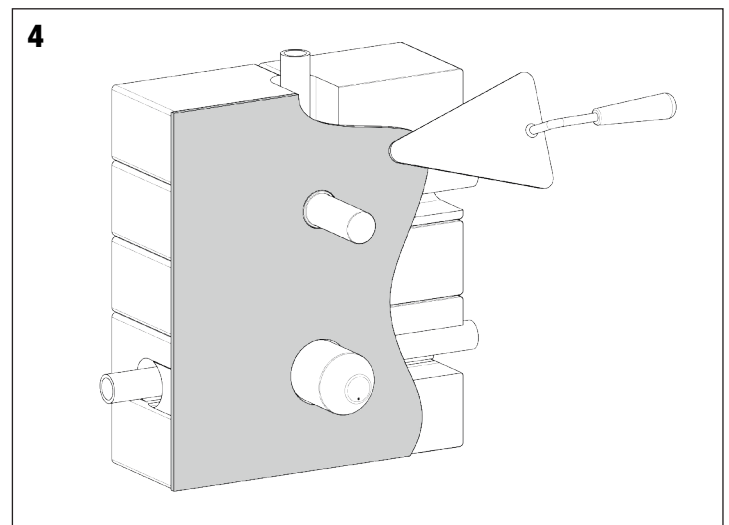
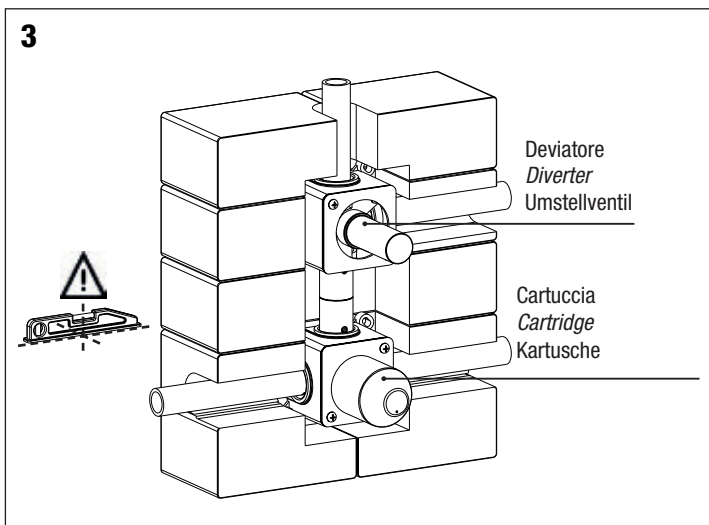
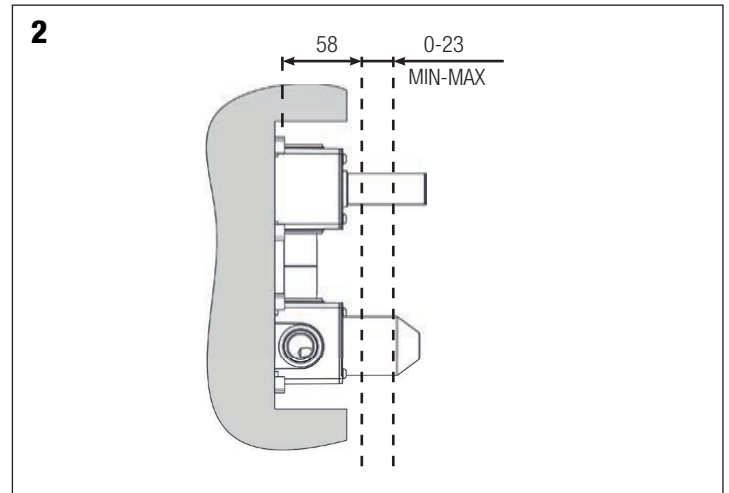
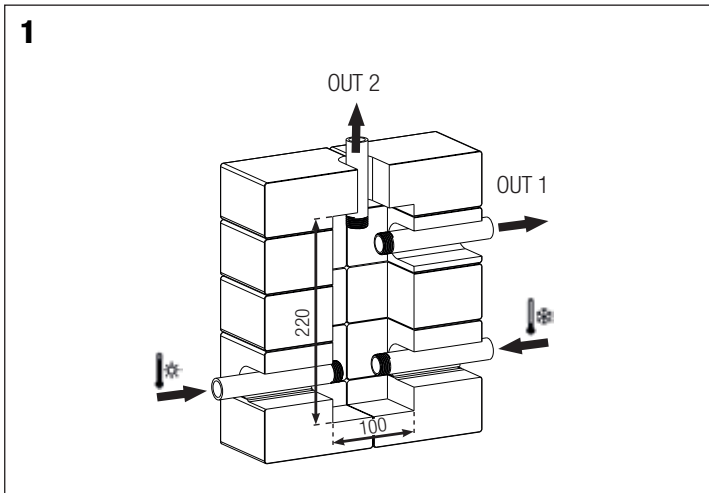
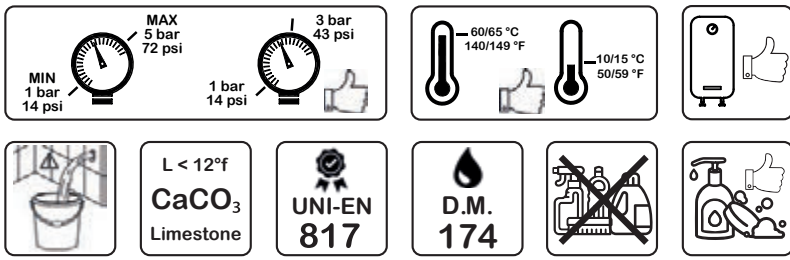


Art. 3181G1/2
Guarnizione G. 1/2"
Gasket G. 1/2"
Dichtung mit 1/2"-Drehung

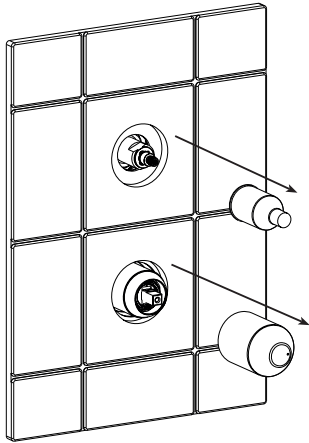


Installazione e manutenzione
Installation and maintenance
Installation und wartung

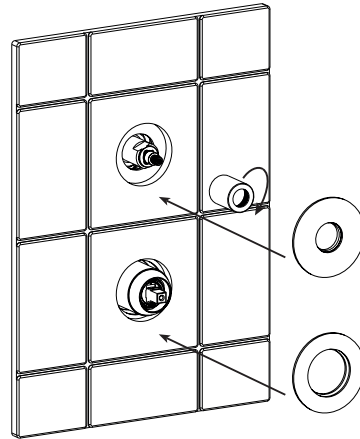
Art. 2403-G51/H51/F51



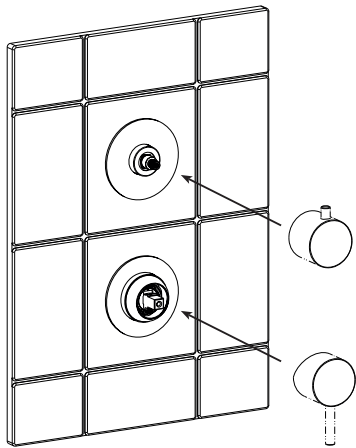
7



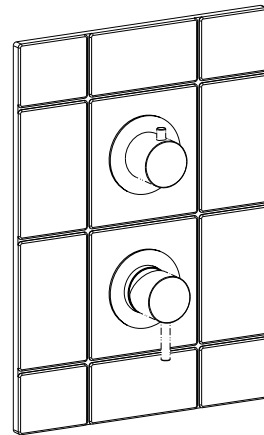
8



9

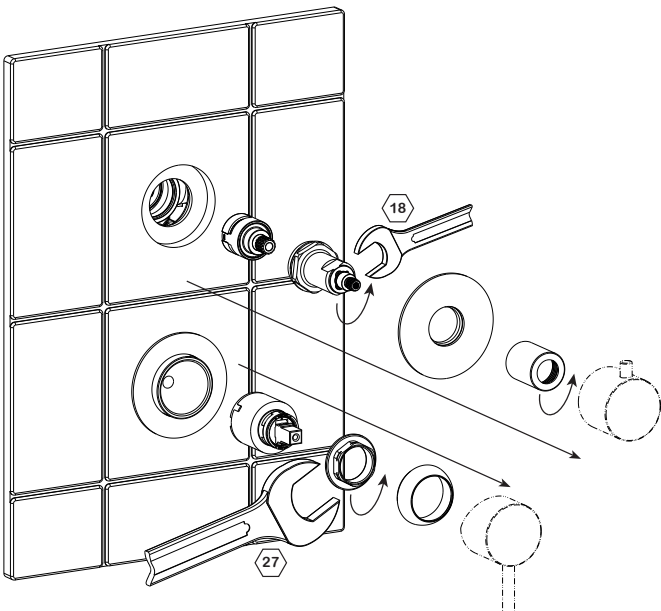


10



Sostituzione delle cartucce - Cartridges replacement

Prima di procedere alla manutenzione o alla sostituzione, chiudere l'acqua della rete idrica.
Turn off the mains water before carrying out maintenance or replacement operations.
Vor dem Austausch oder Wartungsarbeiten das Wasser am Haupthahn abstellen.



Miscelatore **doccia** incasso
Concealed shower mixer
 Einbau-Mischbatterie für **Duschen**



Art. 1024/404
 Art. 1024/405
 Art. 1024/406

completo di scatola di montaggio "system box"
with assembly box "system box"
 mit Montagegehäuse - "System box"



Art. 1024/401
 Art. 1024/402
 Art. 1024/403

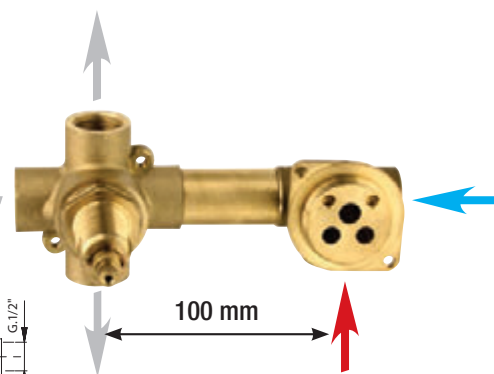
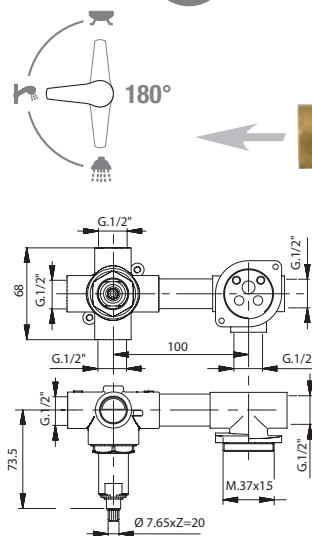
completo di scatola di montaggio "system box"
with assembly box "system box"
 mit Montagegehäuse - "System box"

con deviatore **ceramico**
with ceramic diverter
 Keramik-Umstellventil



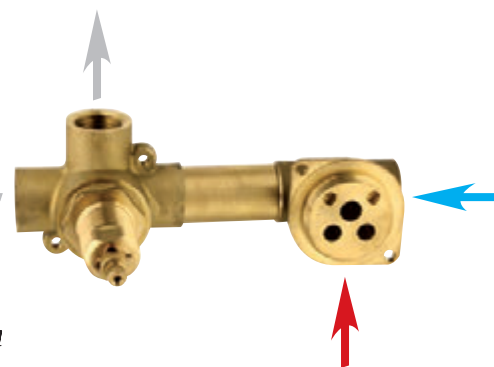
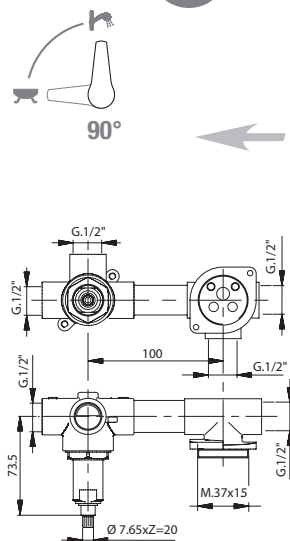
Art. 404

3 exits



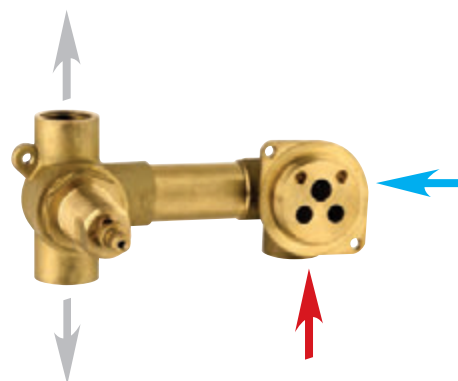
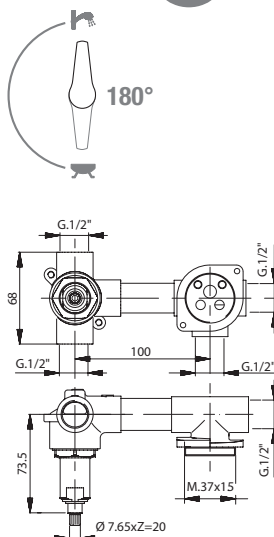
Art. 405

2 exits



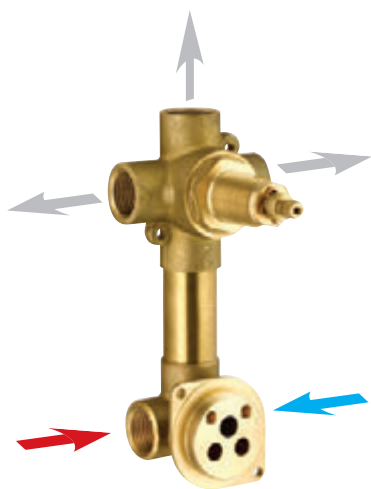
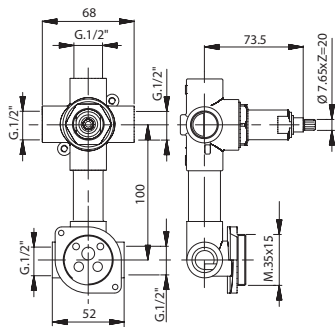
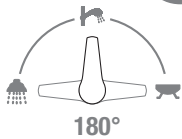
Art. 406

2 exits



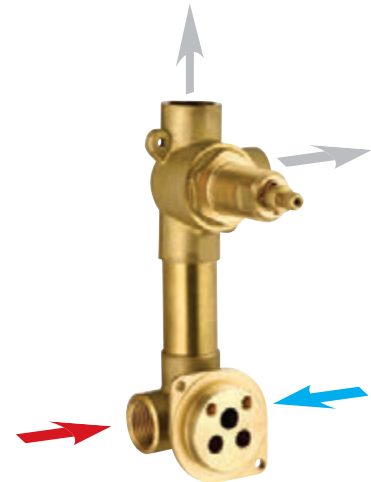
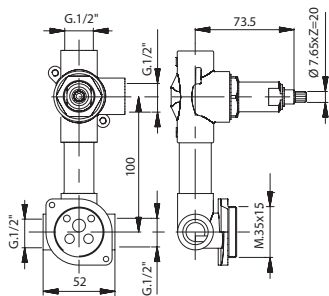
Art. 401

3 exits



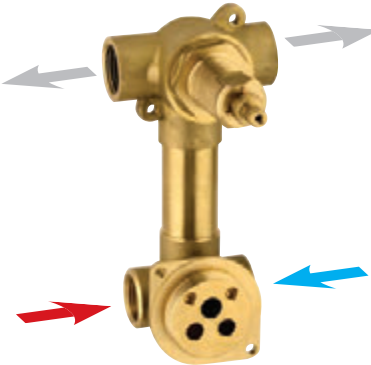
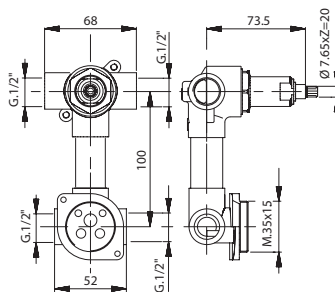
Art. 402

2 exits



Art. 403

2 exits



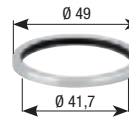
Art. 1013/35

Anello sede cartuccia
Cartridge ring seat
Kartuschenringsitz



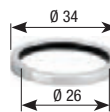
Art. 00050

Anello fissaggio piastra per miscelatore
Plate fixing ring - mixer
Plattenbefestigungsring für Mischbatterie



Art. 00040

Anello fissaggio piastra per deviatore
Plate fixing ring - diverter
Plattenbefestigungsring für Umstellventil



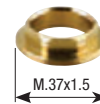
Art. 1003SF

Cappuccio ABS
ABS cap
ABS-Kappe



Art. 1004BS

Ghiera
Ring nut
Gewindehülse



Art. 1468

Anello sede cartuccia
Cartridge ring seat
Kartuschenringsitz



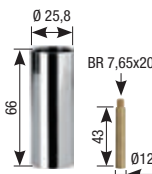
Art. 1465

Cappuccio scorrevole
Sliding sleeve
Schiebehaube



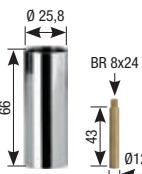
Art. 640

Prolunga deviatore
Diverter extension
Verlängerung
Umstellventil



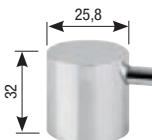
Art. 640A

Prolunga deviatore
Diverter extension
Verlängerung
Umstellventil



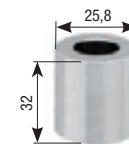
Art. 00120

Maniglia deviatore
Diverter handle
Umstellgriff



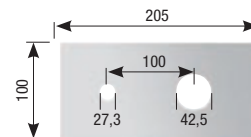
Art. 00080

Coprifiletto deviatore cromato
Diverter cover thread
Verchromte Gewindeabdeckung Umstellventil



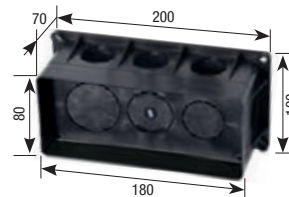
Art. 1024

Piastra cromata
Chromed plate
Verchromte Platte



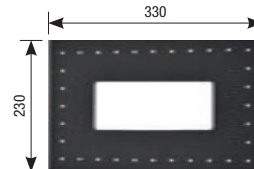
Art. 00097

Scatola di assemblaggio
Multipurpose assembling box
System box Montagegehäuse



Art. 00097ME

Membrana isolante
Insulating membrane
Isolierungsmembran



Art. 00097GU1

Anello gomma foro 25,2 mm (3/4")
O-ring 3/4"
Gummiring mit einer Bohrung von 25,2 mm (3/4")



Art. 00097GU2

Anello gomma foro 19 mm (1/2")
O-ring 1/2"
Gummiring mit einer Bohrung von 19 mm (1/2")



Art. 00097GU3

Tappo Ø 33 mm
Plug Ø 33 mm
Stopfen Ø 33 mm



Miscelatore **doccia** incasso
Concealed shower mixer
 Einbau-Mischbatterie für **Duschen**



Art. 1018/407
 Art. 1018/408
 Art. 1018/409



Art. 1017/407
 Art. 1017/408
 Art. 1017/409

con deviatore **ceramico**
with ceramic diverter
 Keramik-Umstellventil



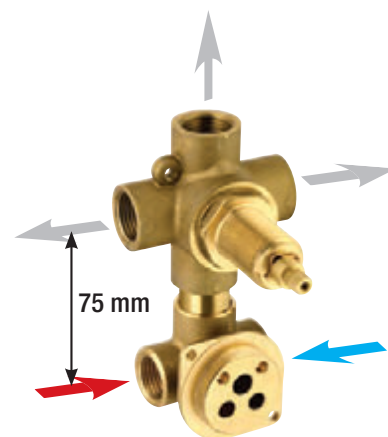
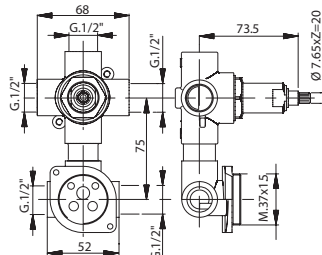
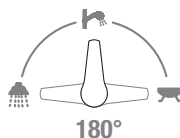
2
exits



3
exits

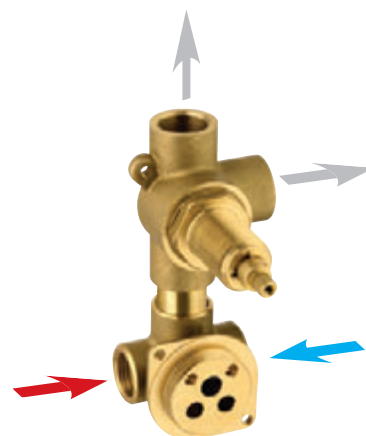
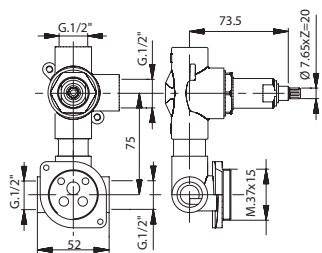
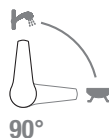
Art. 407

3
exits



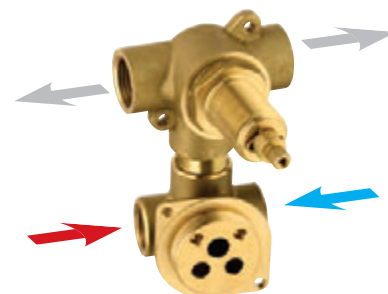
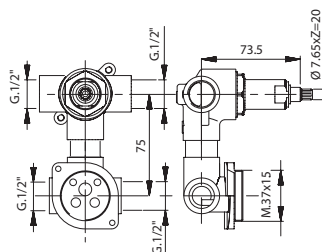
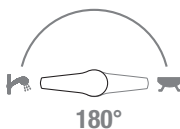
Art. 408

2
exits



Art. 409

2
exits



Art. 1013/35
Anello sede cartuccia
Cartridge ring seat
Kartuschenringsitz



Art. 00050
Anello fissaggio piastra per miscelatore
Plate fixing ring - mixer
Plattenbefestigungsring für Mischbatterie



Art. 00040
Anello fissaggio piastra per deviatore
Plate fixing ring - diverter
Plattenbefestigungsring für Umstellventil



Art. 1003SF
Cappuccio ABS
ABS cap
ABS-Kappe



Art. 1004BS
Ghiera
Ring nut
Gewindehülse



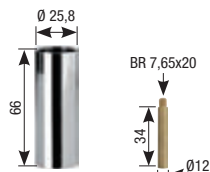
Art. 1468
Anello sede cartuccia
Cartridge ring seat
Kartuschenringsitz



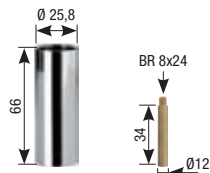
Art. 1465
Cappuccio scorrevole
Sliding sleeve
Schiebehäube



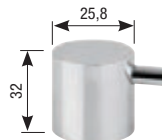
Art. 640
Prolunga deviatore
Diverter extension
Verlängerung Umstellventil



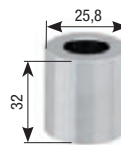
Art. 640A
Prolunga deviatore
Diverter extension
Verlängerung Umstellventil



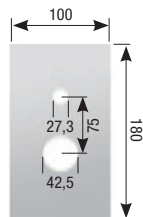
Art. 00120
Maniglia deviatore
Diverter handle
Umstellgriff



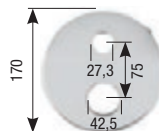
Art. 00080
Coprifiletto deviatore cromato
Diverter cover thread
Verchromte Gewindeabdeckung Umstellventil



Art. 1018
Piastra cromata
Chromed plate
Verchromte Platte



Art. 1017
Piastra cromata
Chromed plate
Verchromte Platte



Miscelatore incasso pannello doccia

Concealed mixer for shower panel

Einbau-Mischbatterie für Duschpaneel

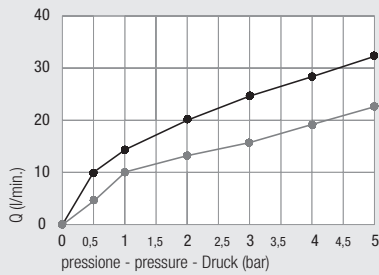
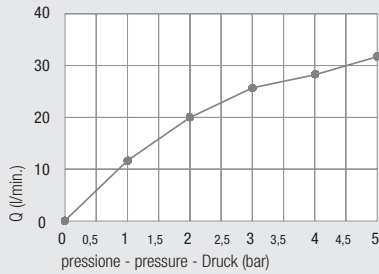
Ø35

DZR
Available

Diagramma di portata
(uscita libera)

Flow diagram
(free exit)

Diagramm der
Durchflussleistung
(freier Ausgang)



Design

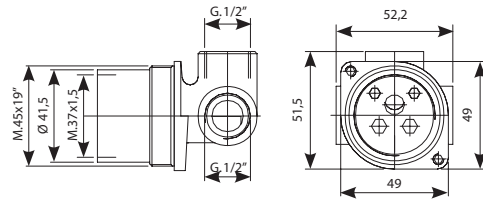
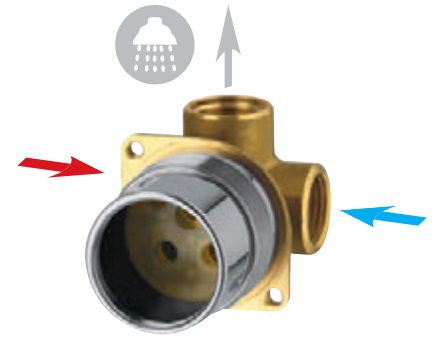


Art.Q
Versione quadrata
Square version
Quadratische Ausführung



Art.MN
Versione minimal ottone cromato o ABS
Minimal design version brass-chrome or ABS
Minimalistische Ausführung Verchromtes Messing oder ABS

Art. 1171



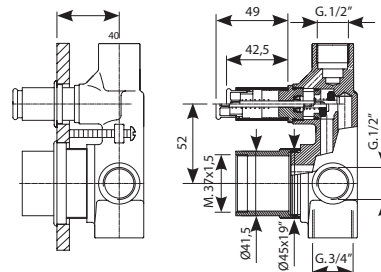
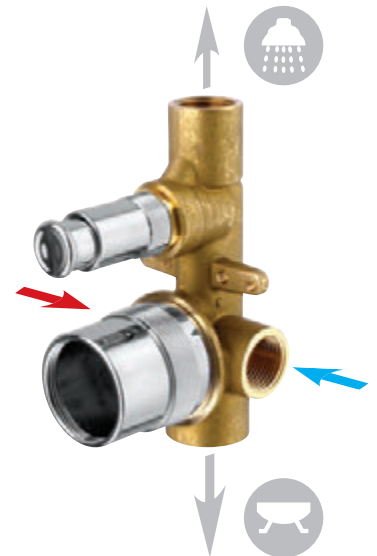
Art. 1181/BOX

con deviatore a pulsante
with push diverter

mit Druckknopfumstellung



2 exits



Art. 1000

Riduttore per cartuccia Ø 35 ABS
Cartridge reduction Ø 35
 ABS-Kartuschenverminderung Ø 35

**Art. 1003SF**

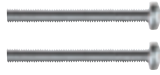
Cappuccio ABS
ABS cap
 ABS-Kappe

**Art. 1004BS**

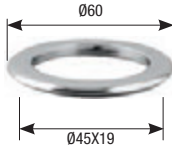
Ghiera
Ring nut
 Gewindehülse

**Art. 2005**

Viti di fissaggio
Fastening screws
 Befestigungsschrauben
 M.5 L=50

**Art. 1006**

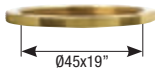
Anello di fissaggio cromo
Fastening ring chrome
 Befestigungsring aus Chrom

**Art. 2007**

Anello di fissaggio cromo
Fastening ring chrome
 Befestigungsring aus Chrom

**Art. 1015**

Ghiera inferiore
Lower nut
 Untere Gewindehülse

**Art. 1001**

Anello sede cartuccia
Cartridge ring seat
 Kartuschenringsitz

**Art. PR20**

Protezione in plastica
Plastic protection
 Kunststoffschutzvorrichtung

**Art. PR45**

Protezione mix
Mix protection
 Schutzvorrichtung Mixer

